

The background features a soft, abstract watercolor wash in shades of light orange, cream, and pale blue. On the right side, there is a faint, grey line-art sketch of a classical clock tower, showing architectural details like arched windows, a clock face, and a tiered top.

ROCK YARD

— SHERATON —



WELCOME TO ROCK YARD

Retro London



1978
— SINCE —

WHO WE ARE

El Batal Group's legacy is traced back to 1978.

With over **40 years** of experience, El Batal Group has earned a prominent position in the **Egyptian** as well as the **Canadian** real estate markets. The family's personal success story is the foundation of the company's values over the years; highlighting professionalism, credibility and trustworthiness within the local and international communities, with bigger prospects to earn further recognition, success and presence in the future.

VISION

Creating Landmarks Built with Care and Years of Trust.

MISSION

To satisfy our clients by building masterful properties, while promoting creativity and innovation within our workforce, community and society.

Creating a fostering and healthy work environment for growing both internally and externally. Reliability, Integrity, and Credibility are our signature service.

Built With Care



CANADIAN MARKET

In 2010, “Doss Homes Company” in Canada was instigated; becoming El Batal Group’s sister real estate company.

It attracted several leading brand names including Tim Hortons, CIBC Bank, Burger King, A&W, and Scotia Bank among others to a variety of retail plazas.

Doss Homes attained presence all over the province of Ontario, in cities such as Toronto, Hamilton, Niagara Falls, Pembroke, Harrow and Stoney Creek.

Tim Hortons

 **Scotiabank**



ROCK COMPOUNDS

Under the Rock umbrella, El Batal Group delivers four residential projects, each is associated with a commercial zone and office spaces, totaling up to four compounds.

El Batal’s cultural Rock concept is the first of its kind, highlighting world-class architectural innovation in a cultural context.

The target was to build and develop sustainable and enduring homes with different styles through cultural-themed compounds, each characterized by the features that define each worldly culture. Embracing this start point, the ROCK concept was brought to light in 2016, represented in a chain of cultural compounds in East and West of Cairo.

ROCK VERA — NEW CAIRO —



Rock Vera compound is inspired by the timeless **Italian architecture**. **Built on 11 acres**, it contains over **270 units** in **New Cairo, Fifth Settlement**, right off Road 90 and 5 minutes away from AUC.

ROCK VILLE — OBOUR CITY —



Rock Ville is a compound that embodies the charm found in **the Asian lifestyle**. The compound is located in the heart of Obour City, **5th District** and consists of over **101 villas built over 12 acres**.

ROCK EDEN — 6TH OF OCTOBER —



Rock Eden compound consists of approximately **1000 units extended over 34 acres** all while maintaining creatively designed landscapes and alluring sceneries in the lively and attractive **6th of October City**.

ROCK GOLD — NEW CAIRO —



Rock Gate is built on 3 acres and it provides a fully equipped Administrative and Commercial Zone, located in The New Cairo, Fifth Settlement in the Golden Square, overlooking The Central Park

ROCK CAPITAL1



Rock Capital One is a total of **100,000m²** and the average floor **gross area is 9,000m²**. The building comprises of two underground parking levels (22,000m²) to suffice the 8 floors capacity.

ROCK YARD

At the heart of Sheraton, Rock Yard Sheraton nourishes. The royal renaissance lies in waiting for your presence.

Rock Yard is located in Sheraton, Nasr road, Behind Mercedes Benz Show Room and Wataneya Gas Station within close proximity to major city landmarks.

You are just there in a few minutes from:

- Cairo International Airport----- 2 Min
- City Center ----- 3 Mins
- Sun City Mall ----- 3 Mins
- Heliopolis and Nasr City ----- 10 Mins

Yard
LOCATION



Project Overview

Experience the attraction & glamour of London streets with the traditional yet, fancy British architecture in Rock Yard compound. The first of its kind in Egypt among a series of cultural-themed compounds, Rock yard delivers an unprecedented British overview that would take you to the city of dreams; where owning your dream home becomes extremely within reach.

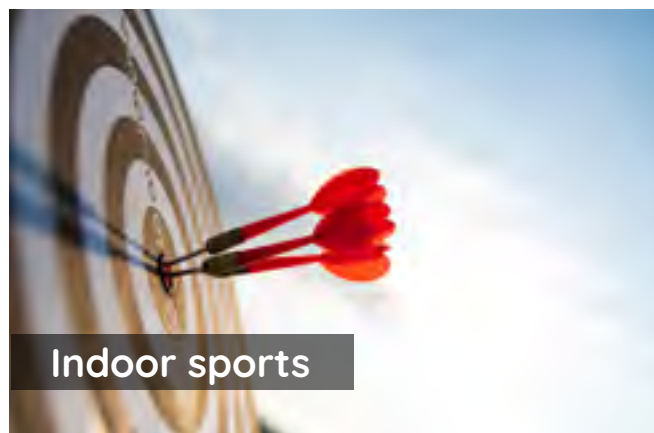
In the private closed residential compound, built almost 6 acres, 15 buildings are designed and built to match the practical & elegant English taste; delivering 650 apartments with ranging areas starting from 100m² to 180m². Aiming to further complement the standard & quality of living in the compound, amenities are carefully planned.

At Rock Yard, we promise ultimate convenience for all family members through providing family-oriented facilities that include an arts & crafts area, home cinema, indoor sports, barbecue area, chess museum in addition to, a book café, a top roof garden & a working space.

Retro London



Amenities



21,025 sqm
TOTAL LAND AREA

3.25 m
FLOOR HEIGHT

APARTMENTS'
AVERAGE GROSS AREA:
100 – 180sqm

15 PLOTS
NUMBER OF LOTS

85,000 sqm
TOTAL GROSS BUA

1.5 acres
LANDSCAPE
A R E A

NUMBER OF GATES
6 Gates

BUILDINGS CONSIST OF
() BASEMENT (S)
• GROUND FLOOR
• 4 TYPICAL FLOORS

COMPOUND
CONCEPT DESIGN:
Retro London

Fact
SHEET

El-Nasr Road طريق النصر

Gate 1

Gate 2

Gate 3

Gate 6

Gate 5

Gate 4

El-Saaquah Street شارع الصاغة



El-Nasr Road طريق النصر

Gate 1

Gate 2

Gate 3

183

182

181

180

178

176

174

172

169

170

179

177

175

173

171

Gate 6

Gate 5

Gate 4

El-Saqaiah Street شارع الصاغة

A red-tinted illustration of a rainy street scene. In the background, a tall clock tower with a face is visible. People are walking on the street, some holding umbrellas. A large red umbrella is prominent in the foreground. The scene is set on a cobblestone street with trees and a street lamp.

Floor

Plans

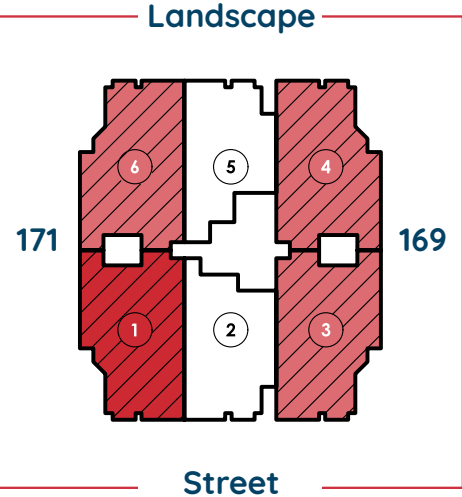


Plot 170

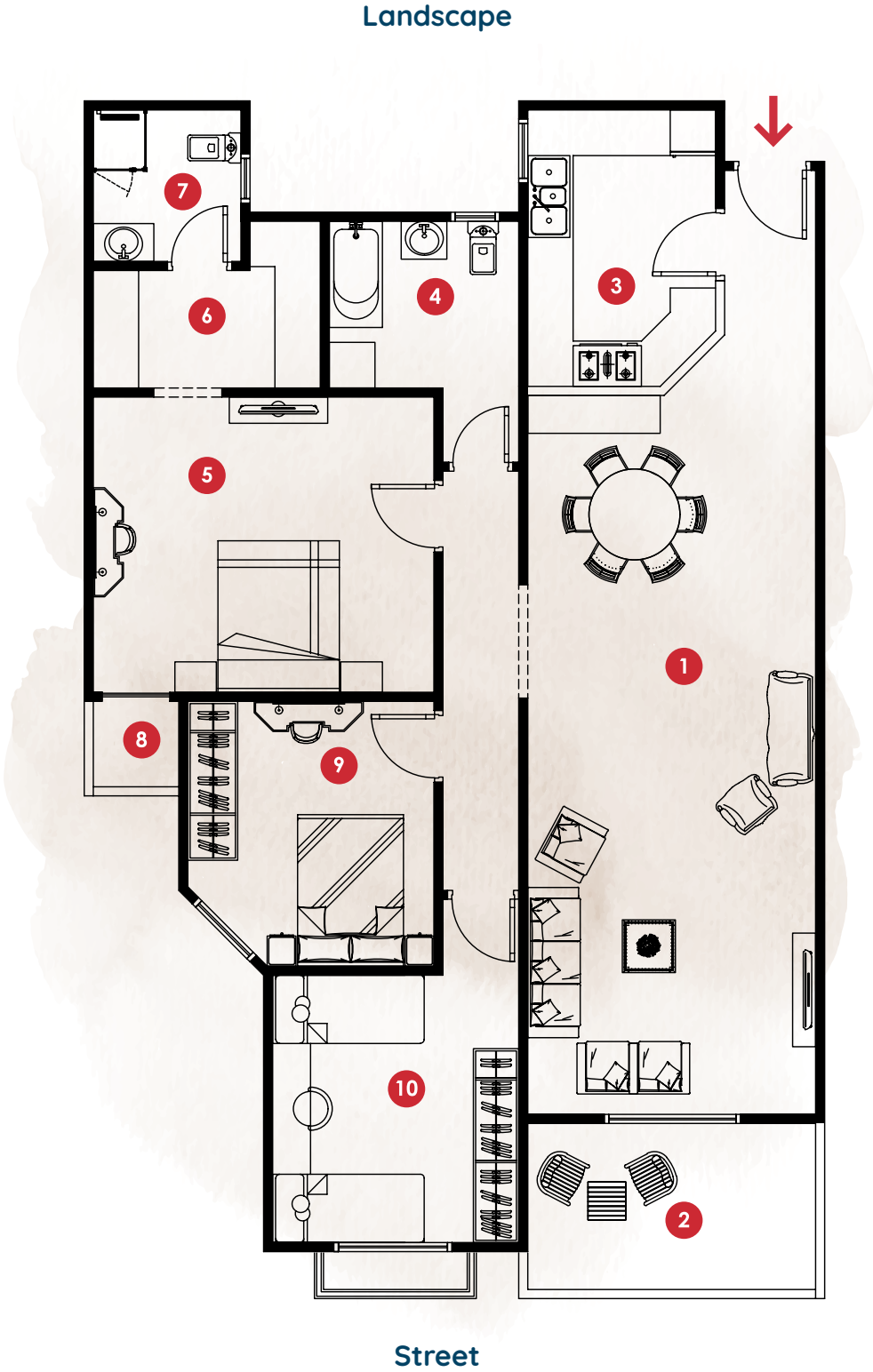
Floor
PLANS

Flat (1-3-4-6)

Areas 166 m²



Space No.	Name	Dimensions
1	Reception & Dining	9.62x3.92 M
2	Terrace	2.37x3.92 M
3	Kitchen	3.77x2.66 M
4	Bathroom	2.38x2.62 M
5	Master Bedroom	4.02x4.68 M
6	Dressing Room	1.67x3.18 M
7	M.Ensuite	2.12x2.19 M
8	Terrace	1.31x1.31 M
9	Bedroom 1	3.62x3.37 M
10	Bedroom 2	3.71x3.43 M



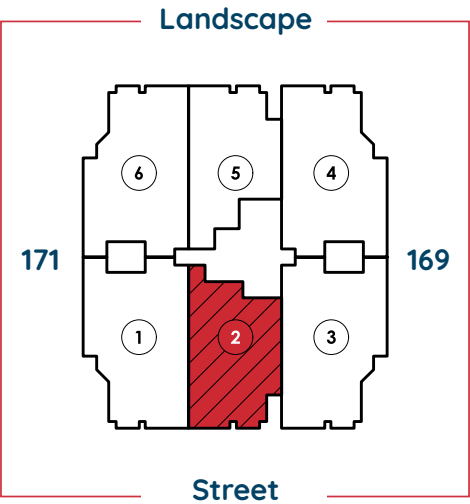
All renders and visual materials are for illustrative purpose only. Actual areas may vary from the started figures. All dimensions are measured to structural element.

Plot 170

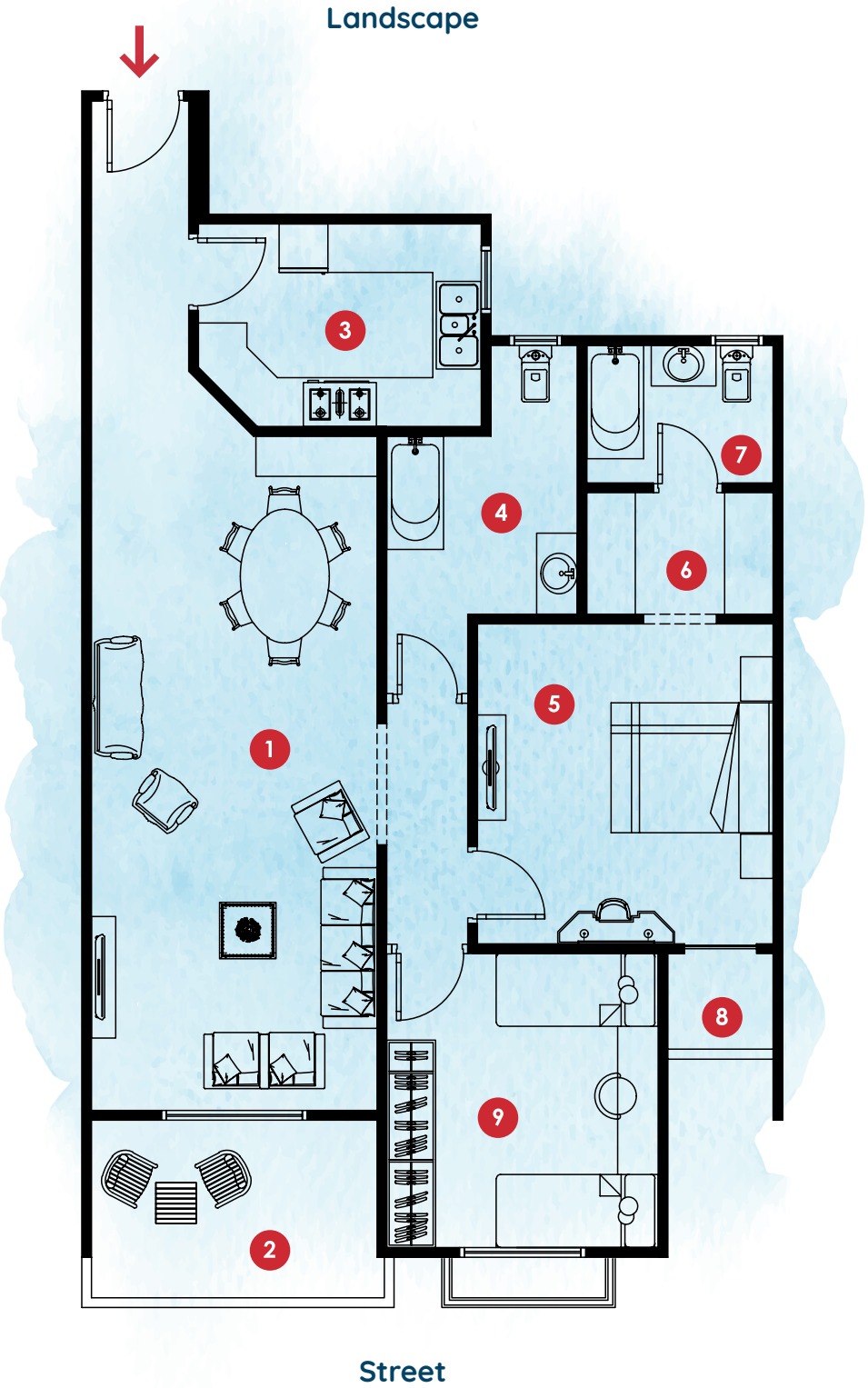
Floor
PLANS

Flat (2)

Areas 134 m²



Space No.	Name	Dimensions
1	Reception & Dining	8.45x3.65 M
2	Terrace	2.37x3.65 M
3	Kitchen	2.68x3.68 M
4	Bathroom	2.32x2.47 M
5	Master Bedroom	4.07x3.77 M
6	Dressing Room	1.62x2.42 M
7	M.Ensuite	1.88x2.42 M
8	Terrace	1.36x1.42 M
9	Bedroom 1	3.81x3.53 M

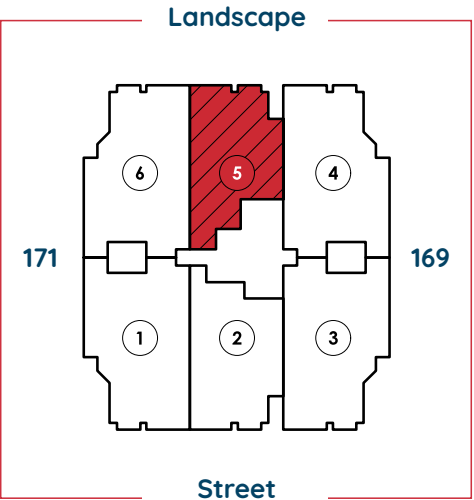


Plot 170

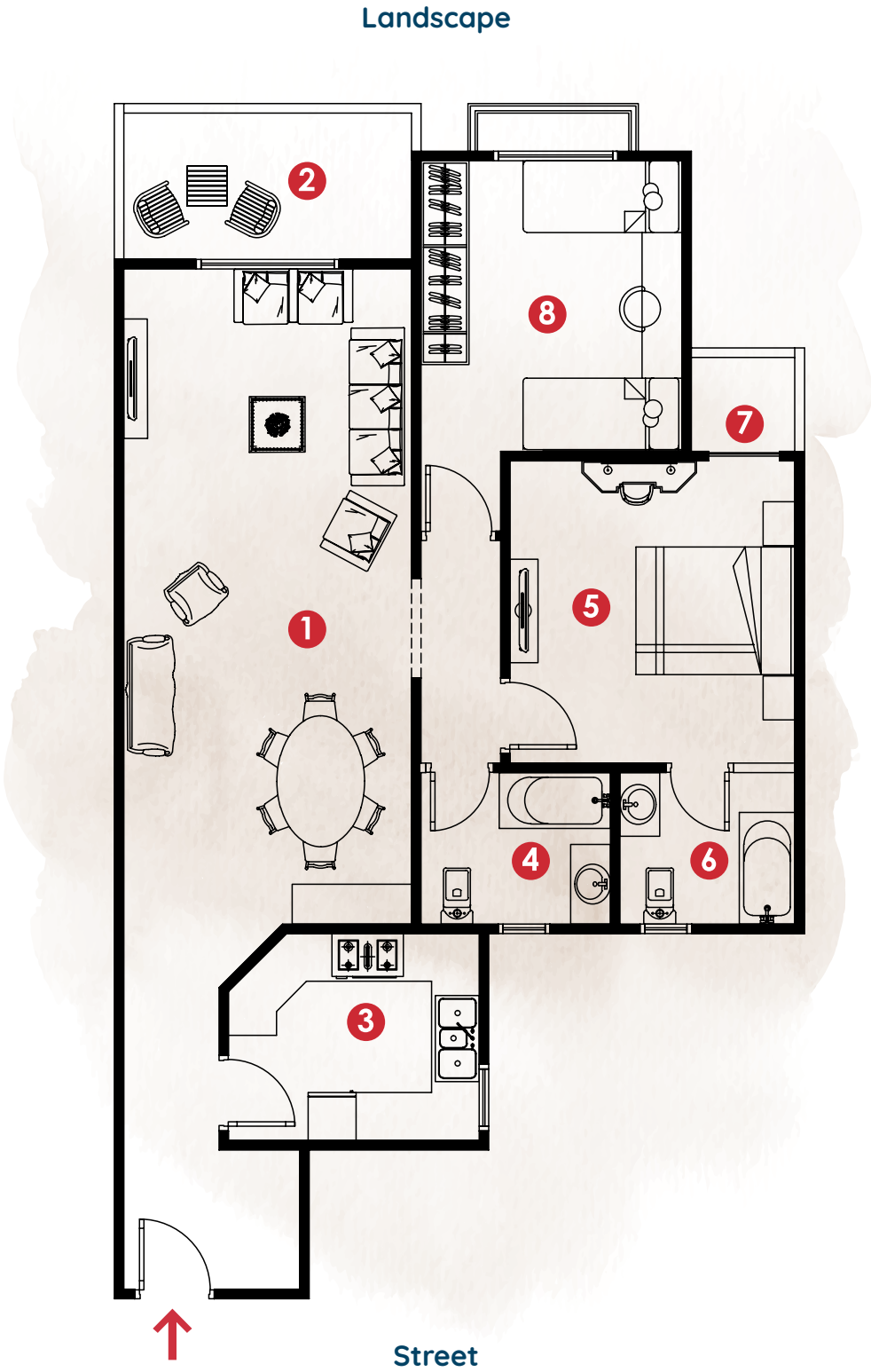
Floor
PLANS

Flat (5)

Areas 126 m²



Space No.	Name	Dimensions
1	Reception & Dining	8.35x3.74 M
2	Terrace	2.02x3.74 M
3	Kitchen	2.78x3.33 M
4	Bathroom	2.08x2.50 M
5	Master Bedroom	3.92x3.70 M
6	M.Ensuite	2.08x2.32 M
7	Terrace	1.36x1.42 M
8	Bedroom 1	3.83x3.46 M

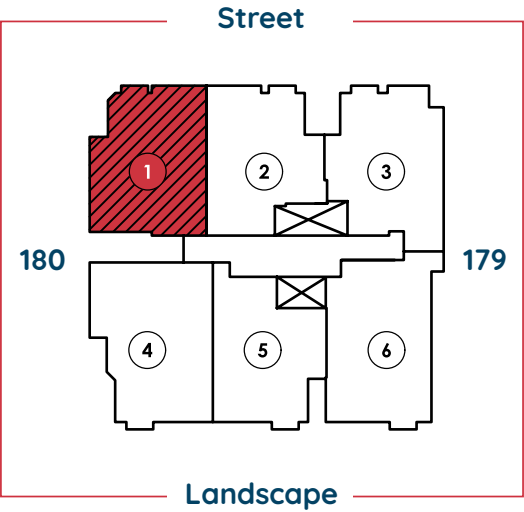


All renders and visual materials are for illustrative purpose only. Actual areas may vary from the started figures. All dimensions are measured to structural element.



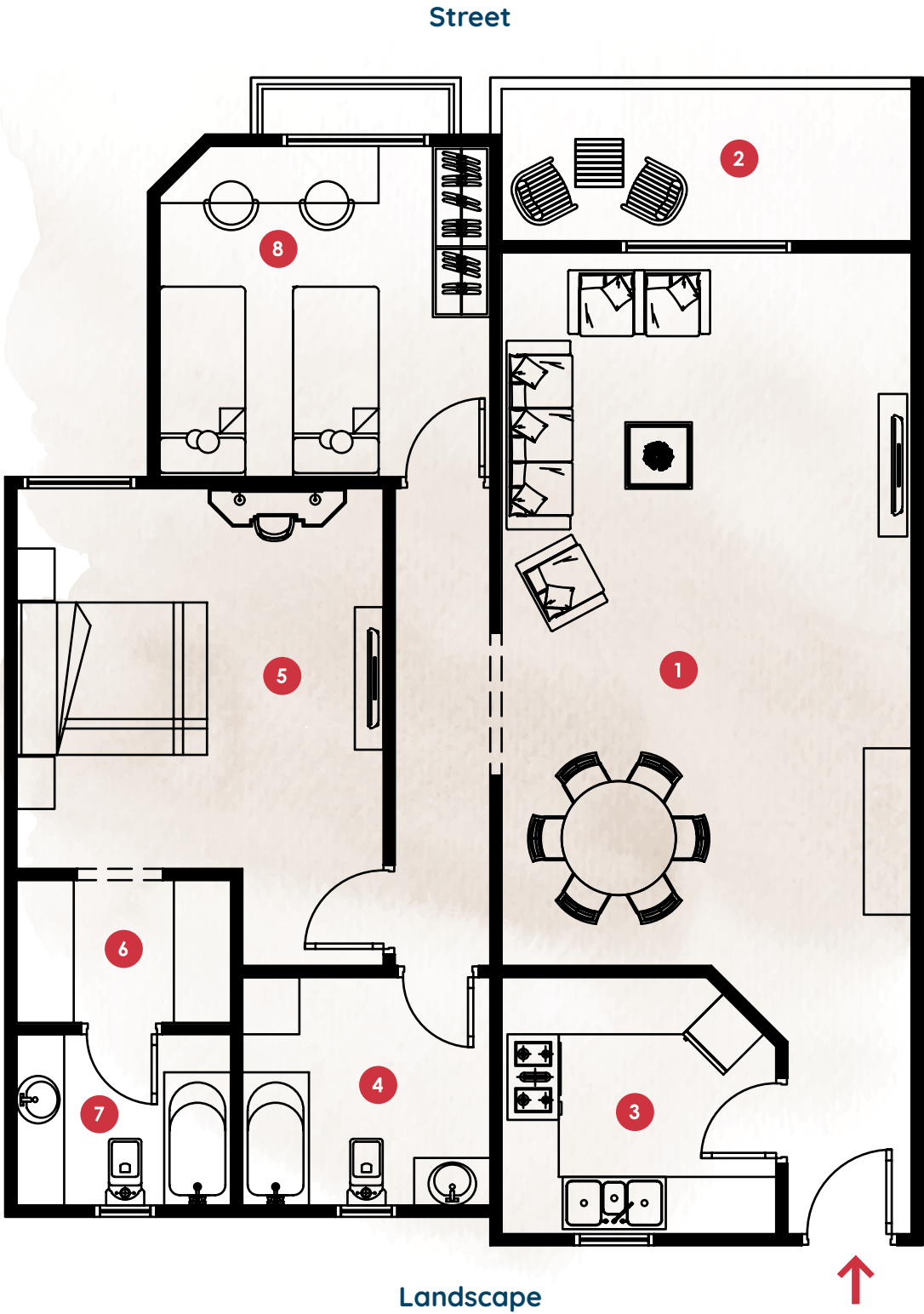
Plot 178

Flat (1) Areas 137 m²



Space No.	Name	Dimensions
1	Reception & Dining	7.62x4.48
2	Terrace	1.78x4.48
3	Kitchen	2.88x3.00
4	Bathroom	2.58x2.72
5	Master Bedroom	4.18x4.03
6	Dressing	1.62x2.43
7	Master Bathroom	1.98x2.43
8	Bedroom 1	3.66x3.65

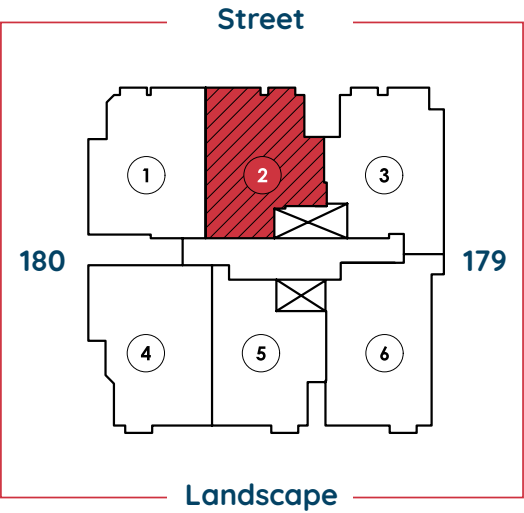
Floor
PLANS



All renders and visual materials are for illustrative purpose only. Actual areas may vary from the started figures. All dimensions are measured to structural element.

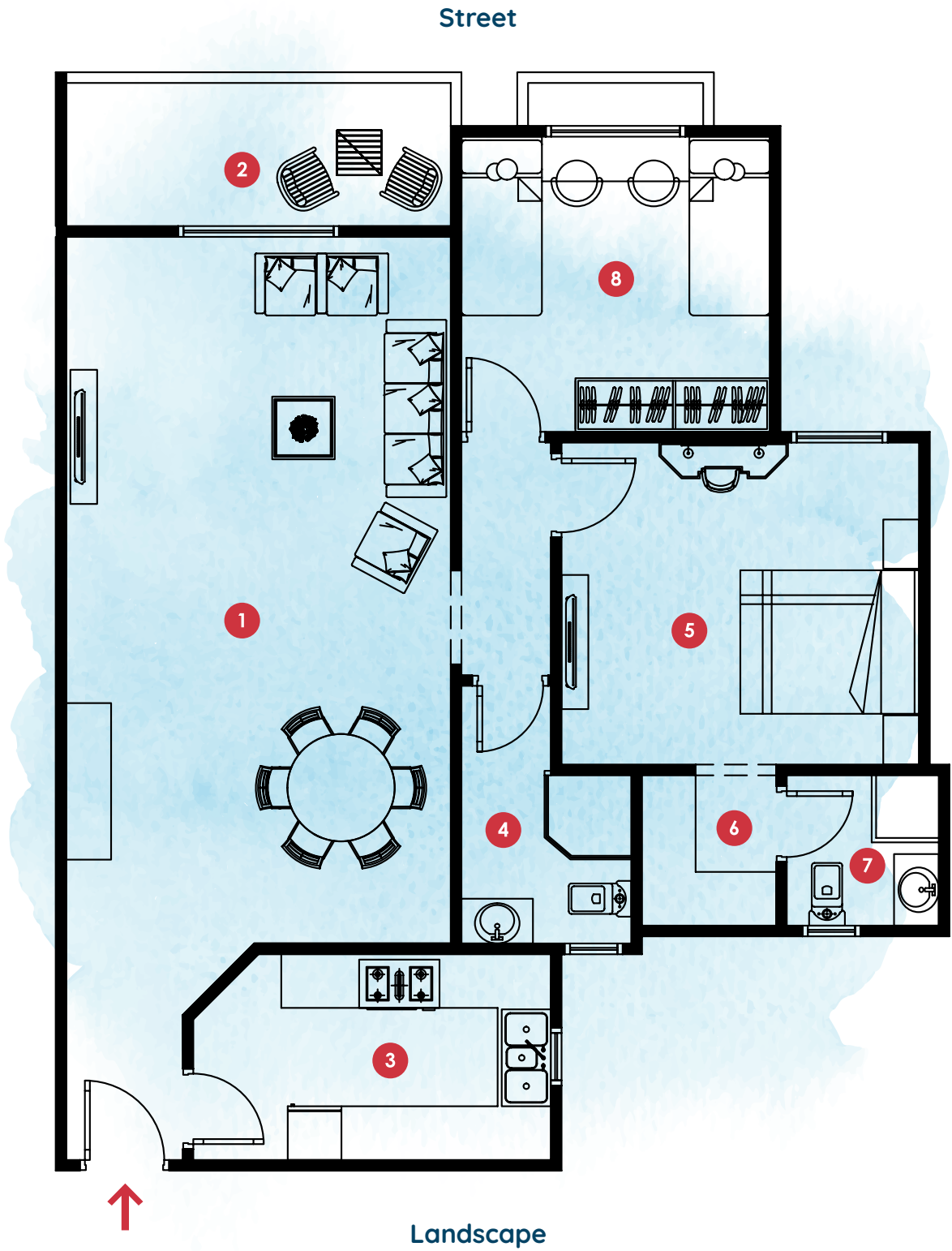
Plot 178

Flat (2)
Areas 128 m²



Space No.	Name	Dimensions
1	Reception & Dining	8.02x4.42
2	Terrace	1.78x4.42
3	Kitchen	2.48x4.18
4	Bathroom	2.06x2.02
5	Master Bedroom	3.72x4.12
6	Dressing	1.86x1.62
7	Master Bathroom	1.86x1.82
8	Bedroom 1	3.48x3.63

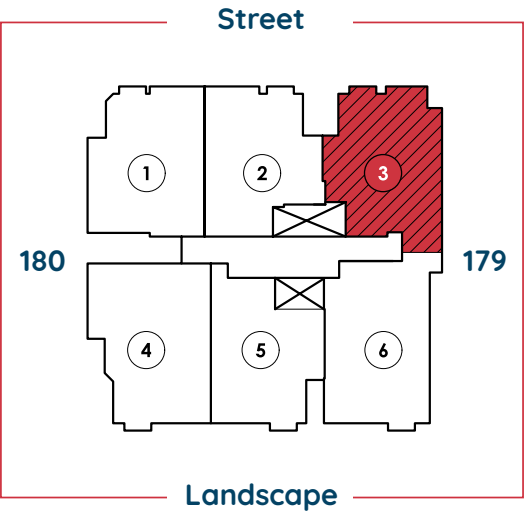
Floor
PLANS



All renders and visual materials are for illustrative purpose only. Actual areas may vary from the started figures. All dimensions are measured to structural element.

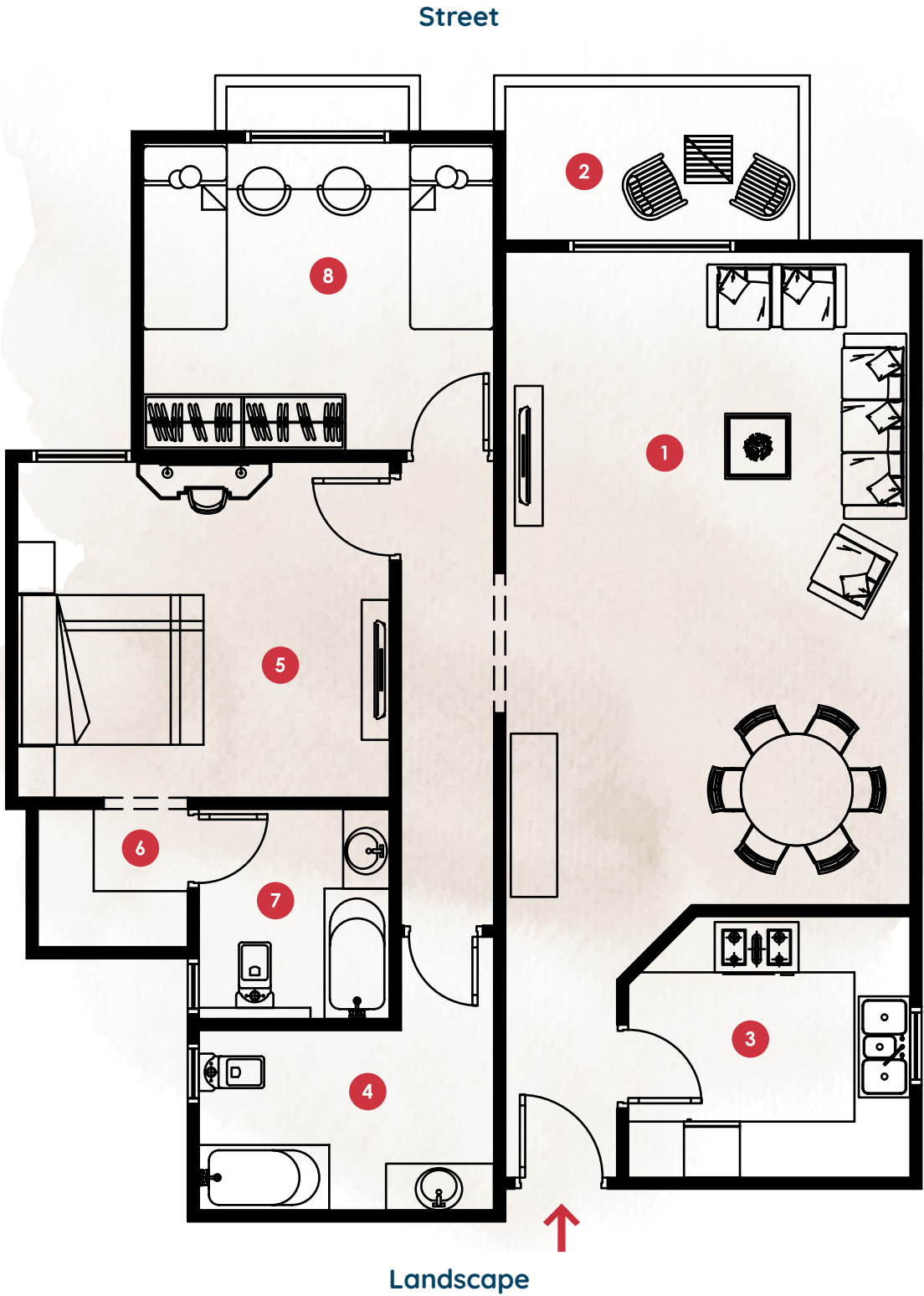
Plot 178

Flat (3)
Areas 130 m²



Space No.	Name	Dimensions
1	Reception & Dining	7.12x4.53
2	Terrace	1.83x3.33
3	Kitchen	2.92x3.21
4	Bathroom	2.11x3.35
5	Master Bedroom	3.72x4.12
6	Dressing	1.66x1.73
7	Master Bathroom	2.37x2.17
8	Bedroom 1	3.48x3.95

Floor
PLANS



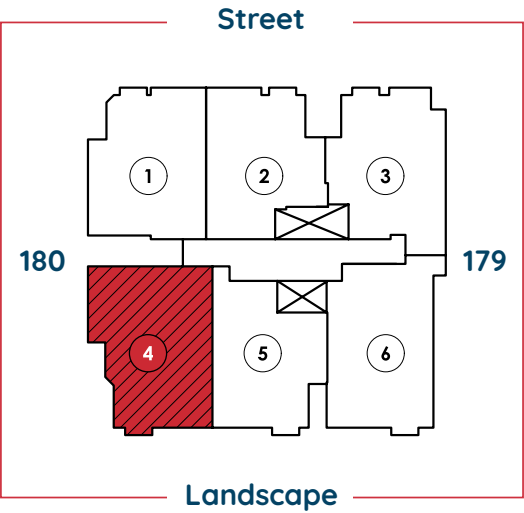
All renders and visual materials are for illustrative purpose only. Actual areas may vary from the started figures. All dimensions are measured to structural element.

Plot 178

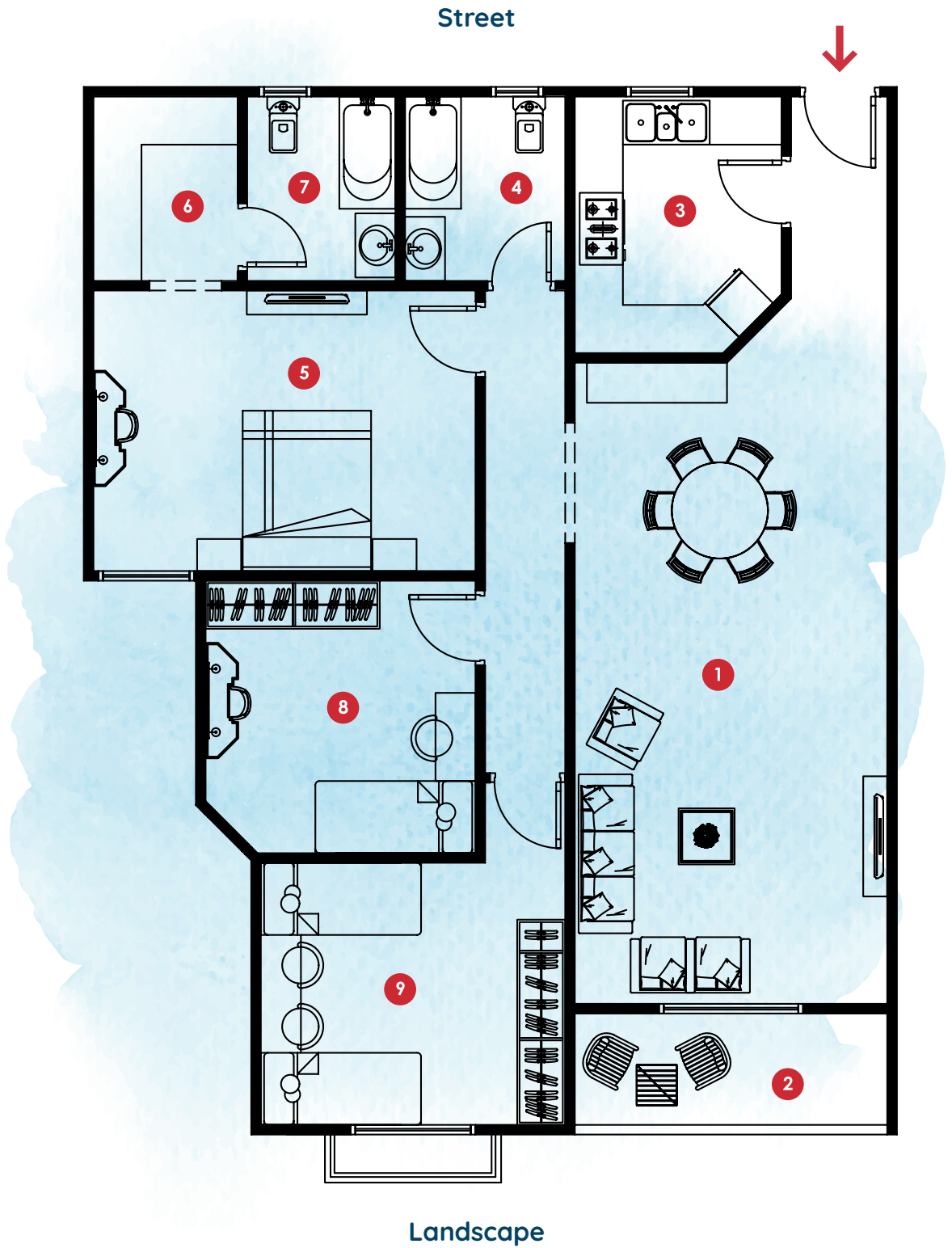
Floor
PLANS

Flat (4)

Areas 152 m²



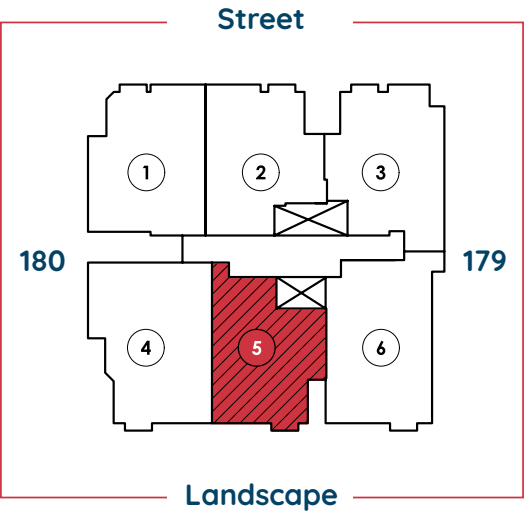
Space No.	Name	Dimensions
1	Reception & Dining	8.12x4.02
2	Terrace	1.57x4.02
3	Kitchen	3.38x2.7
4	Bathroom	2.48x2.12
5	Master Bedroom	3.62x4.95
6	Dressing	2.48x1.98
7	Master Bathroom	2.48x1.97
8	Bedroom 1	3.52x3.55
9	Bedroom 2	3.45x3.98



All renders and visual materials are for illustrative purpose only. Actual areas may vary from the started figures. All dimensions are measured to structural element.

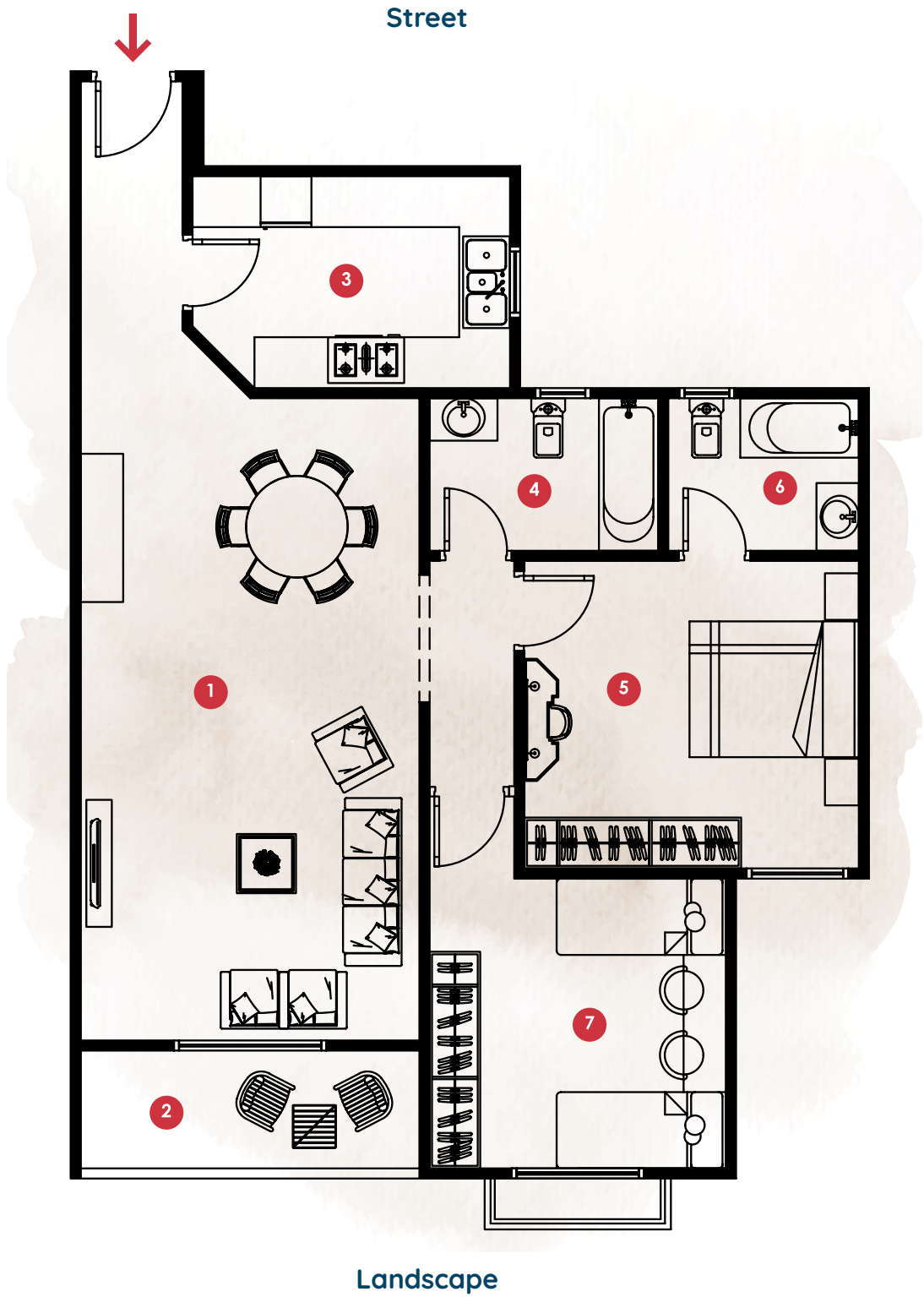
Plot 178

Flat (5) Areas 123 m²



Space No.	Name	Dimensions
1	Reception & Dining	7.70x4.12
2	Terrace	1.57x4.12
3	Kitchen	2.62x3.93
4	Bathroom	1.98x2.82
5	Master Bedroom	3.75x4.07
6	Master Bathroom	1.98x2.37
7	Bedroom 1	3.60x3.68

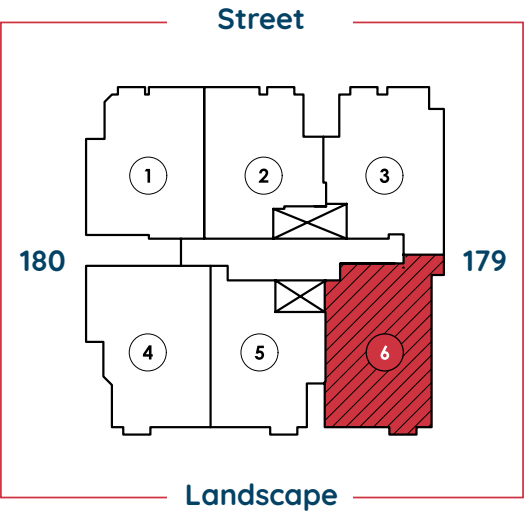
Floor
PLANS



All renders and visual materials are for illustrative purpose only. Actual areas may vary from the started figures. All dimensions are measured to structural element.

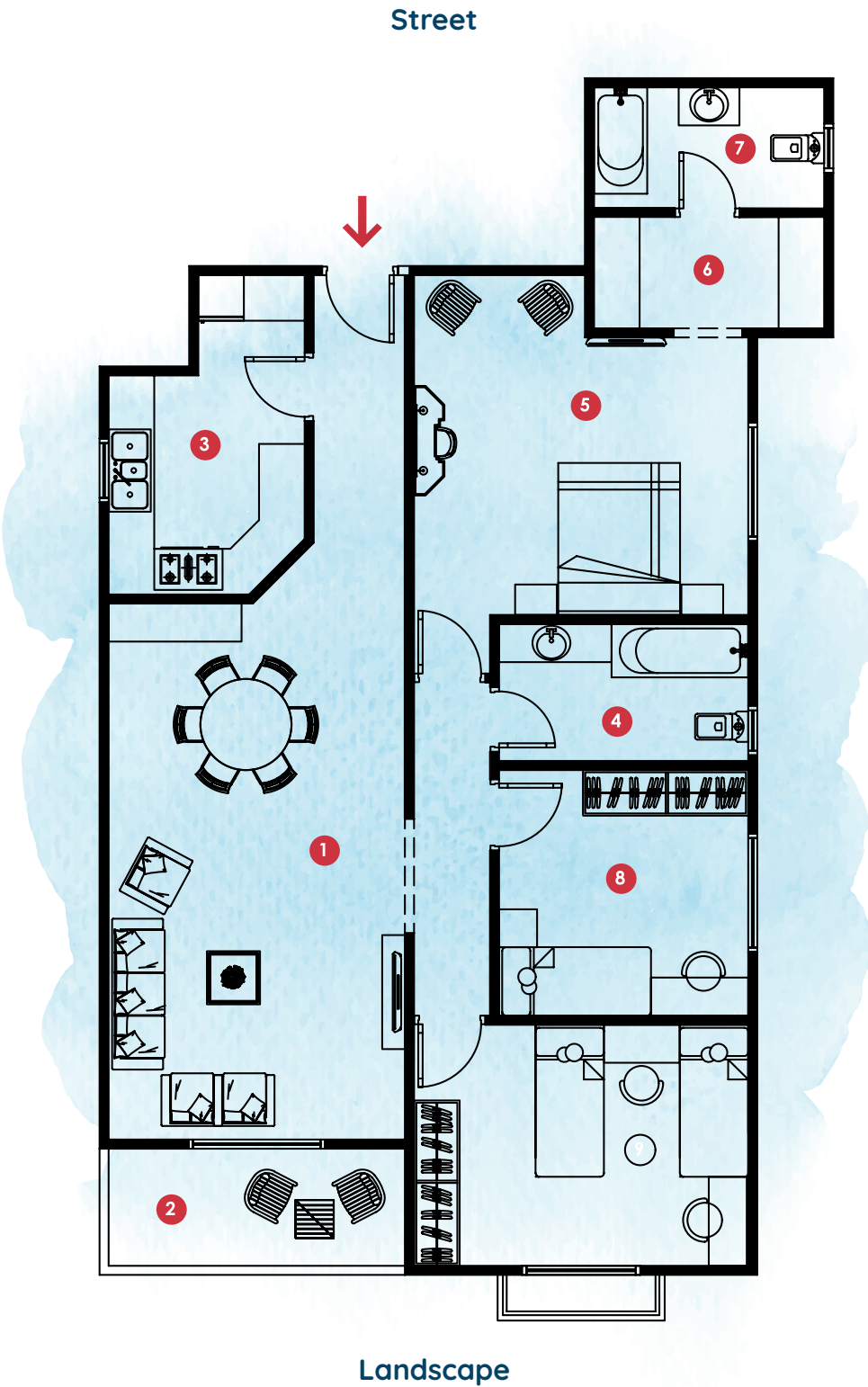
Plot 178

Flat (6) Areas 154 m²



Space No.	Name	Dimensions
1	Reception & Dining	7.17x4.02
2	Terrace	1.72x4.08
3	Kitchen	4.38x2.76
4	Bathroom	1.92x3.46
5	Master Bedroom	4.65x4.58
6	Dressing	1.58x3.27
7	Master Bathroom	1.71x3.27
8	Bedroom 1	3.35x3.46
9	Bedroom 2	3.35x4.58

Floor
PLANS

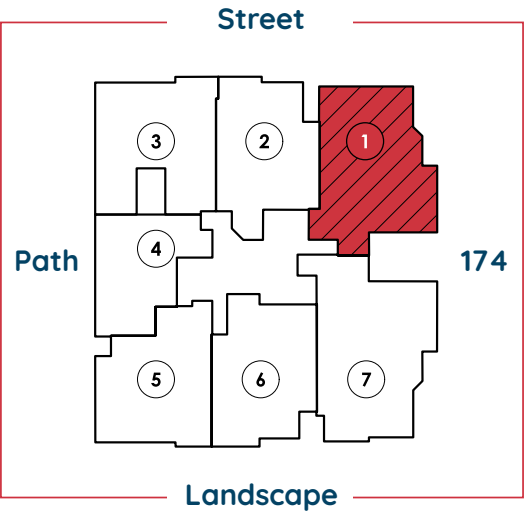




Plot 176

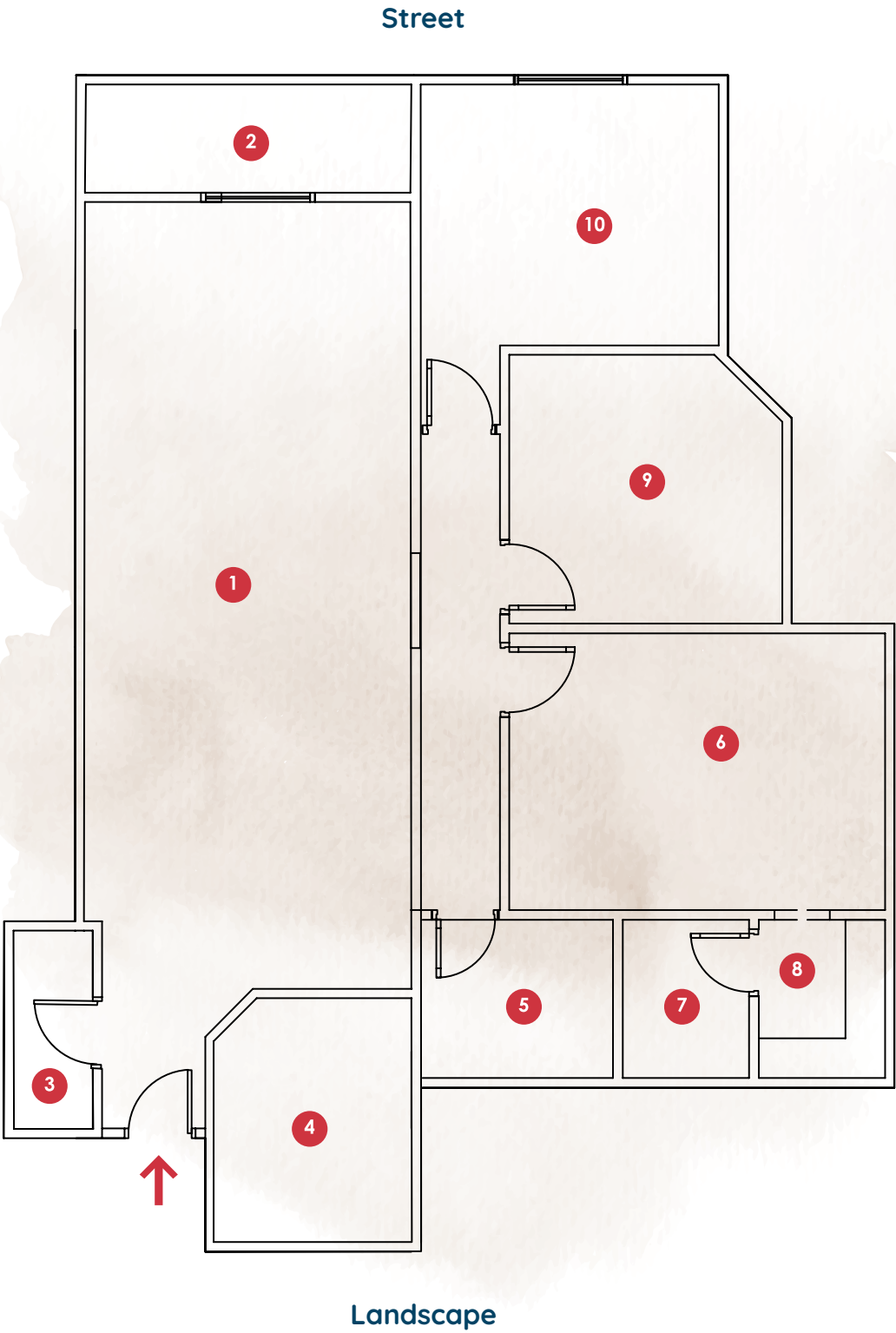
Flat (1)

Areas 161 m²



Space No.	Name	Dimensions
1	Reception & Dining	10.2x4.25 M
2	Terrace	4.25x1.54 M
3	W.C	2.74 X1.19 M
4	Kitchen	2.66x3.18M
5	Bathroom	2.53x2.16 M
6	Master Bedroom	4.93x3.5 M
7	M.Ensuite	1.73x2.16 M
8	Dressing Room	1.78x2.16 M
9	Bedroom 1	3.63x3.52 M
10	Bedroom 2	3.95x3.48 M

Floor
PLANS

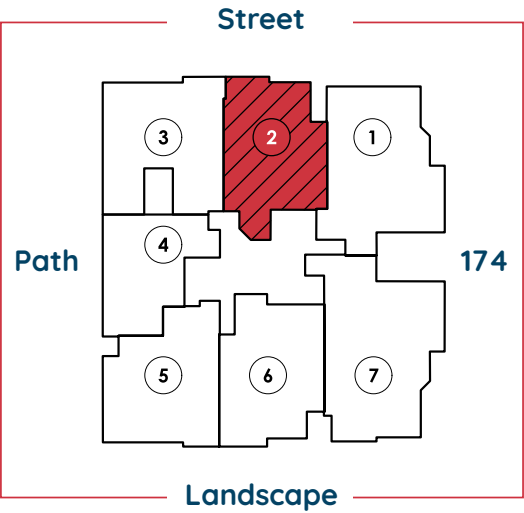


All renders and visual materials are for illustrative purpose only. Actual areas may vary from the started figures. All dimensions are measured to structural element.

Plot 176

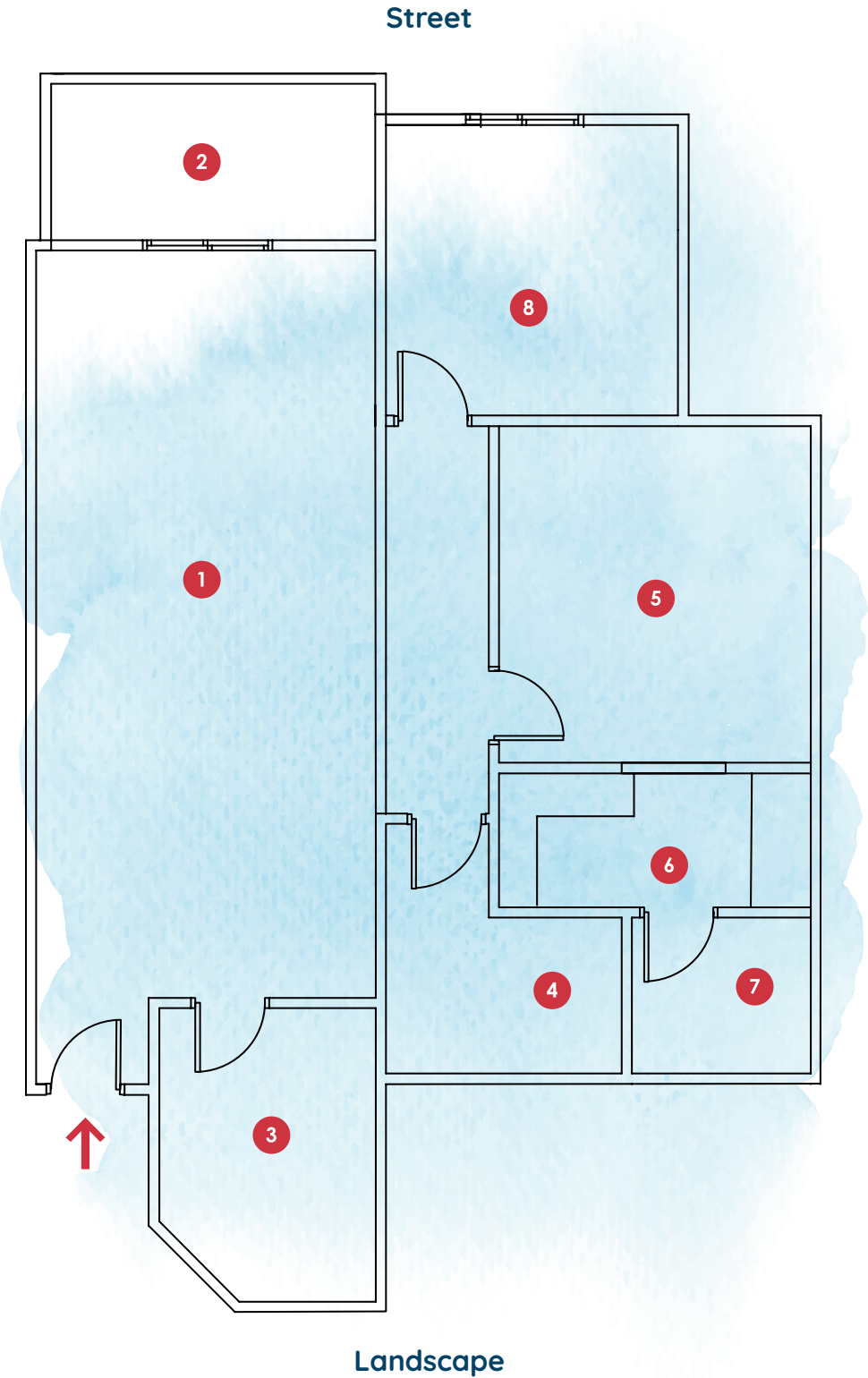
Flat (2)

Areas 131 m²



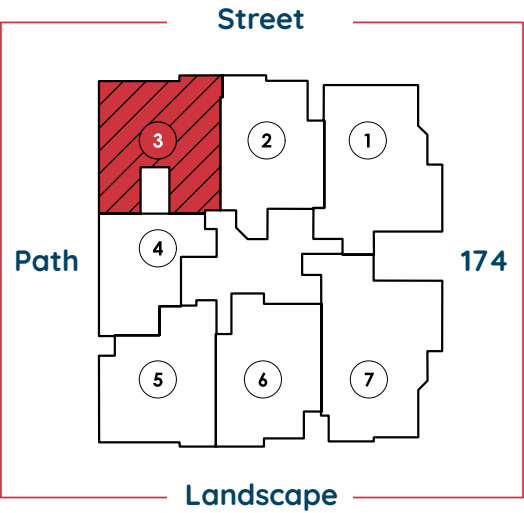
Space No.	Name	Dimensions
1	Reception & Dining	8.74x4.04M
2	Terrace	3.88x1.98 M
3	Kitchen	2.74x3.58 M
4	Bathroom	2.83x1.98 M
5	Master Bedroom	3.77x4.08 M
6	Dressing Room	3.77x1.65 M
7	M.Ensuite	2.13x1.98 M
8	Bedroom 1	3.56x3.54 M

Floor
PLANS



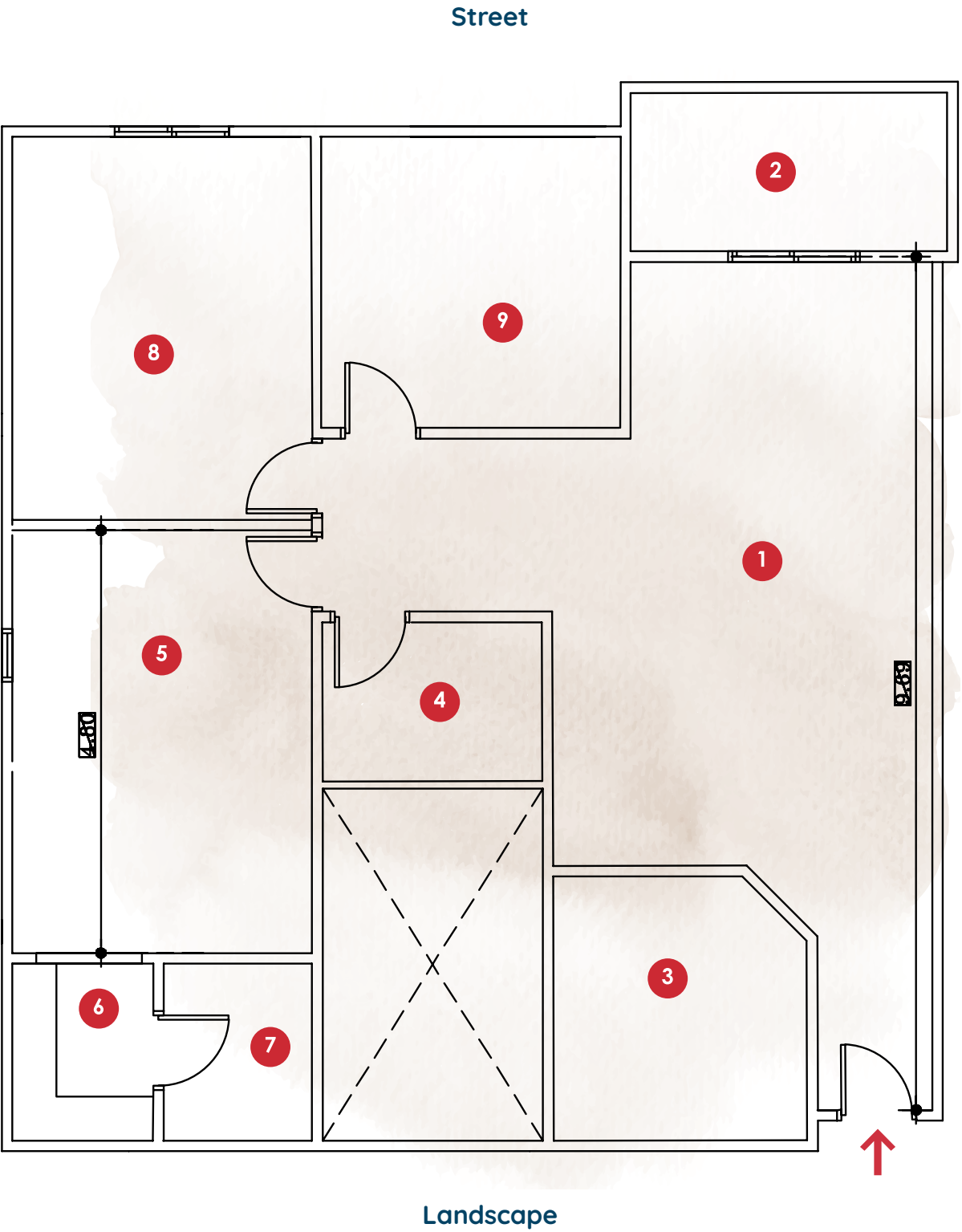
Plot 176

Flat (3) Areas 143 m²



Space No.	Name	Dimensions
1	Reception & Dining	9.69x4.5 M
2	Terrace	1.98x3.73 M
3	Kitchen	3.17x3.07 M
4	Bathroom	1.95x2.62 M
5	Master Bedroom	4.80x3.58 M
6	Dressing Room	2.12 X1.65 M
7	M.Ensuite	2.12x1.88 M
8	Bedroom 1	4.35x3.40 M
9	Bedroom 2	3.49x3.51 M

Floor
PLANS

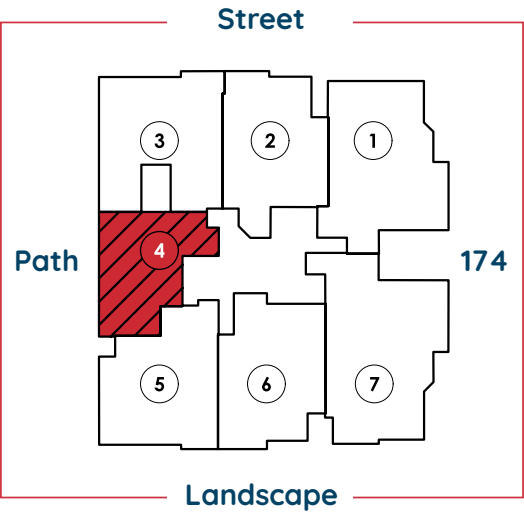


All renders and visual materials are for illustrative purpose only. Actual areas may vary from the started figures. All dimensions are measured to structural element.

Plot 176

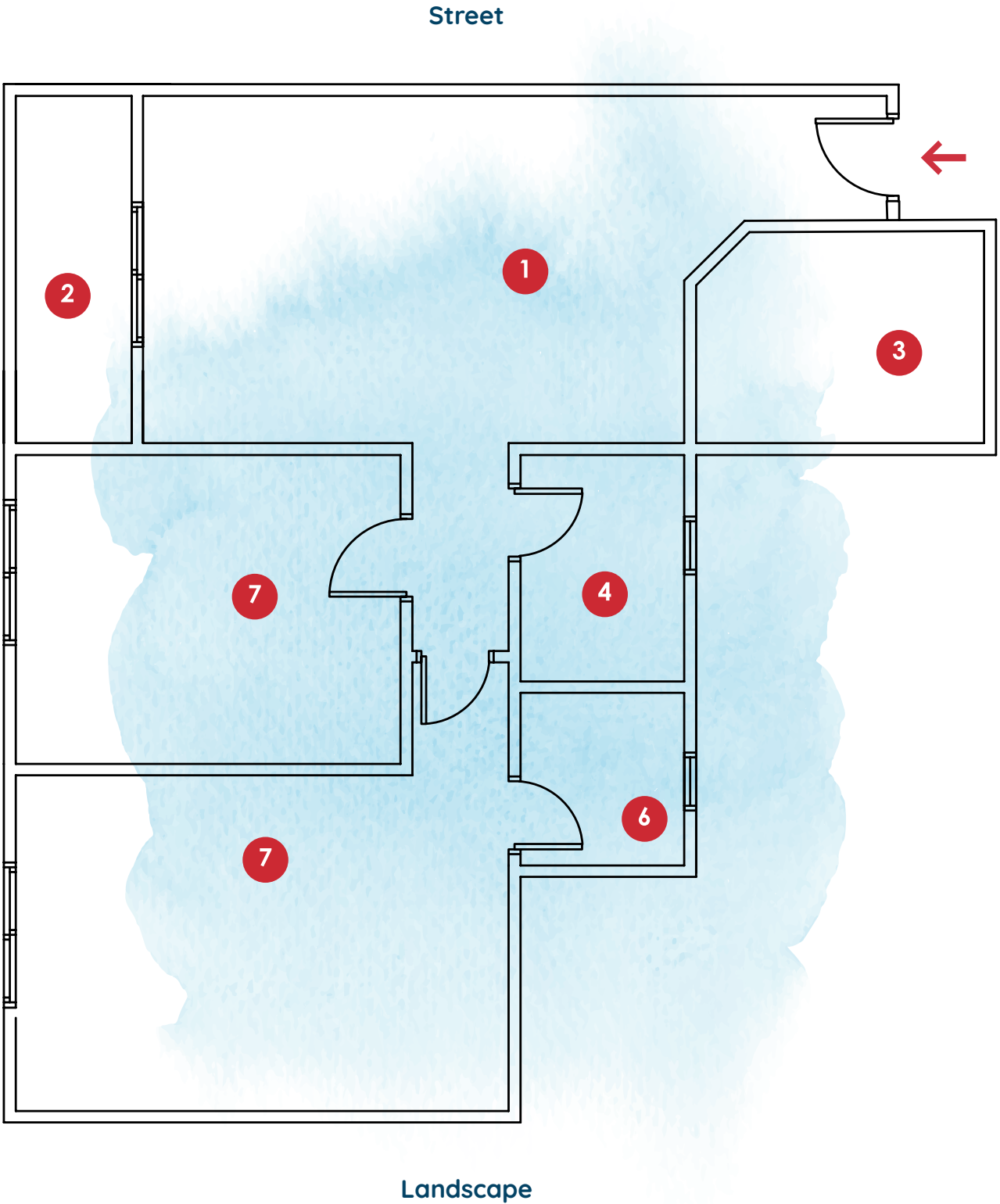
Flat (4)

Areas 103 m²



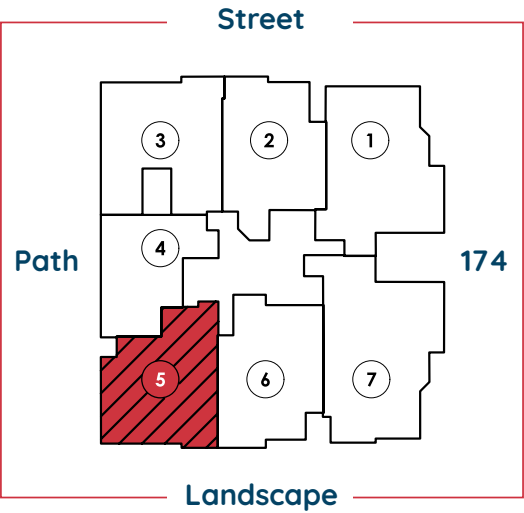
Space No.	Name	Dimensions
1	Reception & Dining	7.89x3.74 M
2	Terrace	139x3.74 M
3	Kitchen	3.17x2.38 M
4	Bathroom	2.46x1.88 M
5	Master Bedroom	3.65x5.35 M
6	M.Ensuite	1.96x1.88 M
7	Bedroom 1	3.31x4.17M

Floor
PLANS



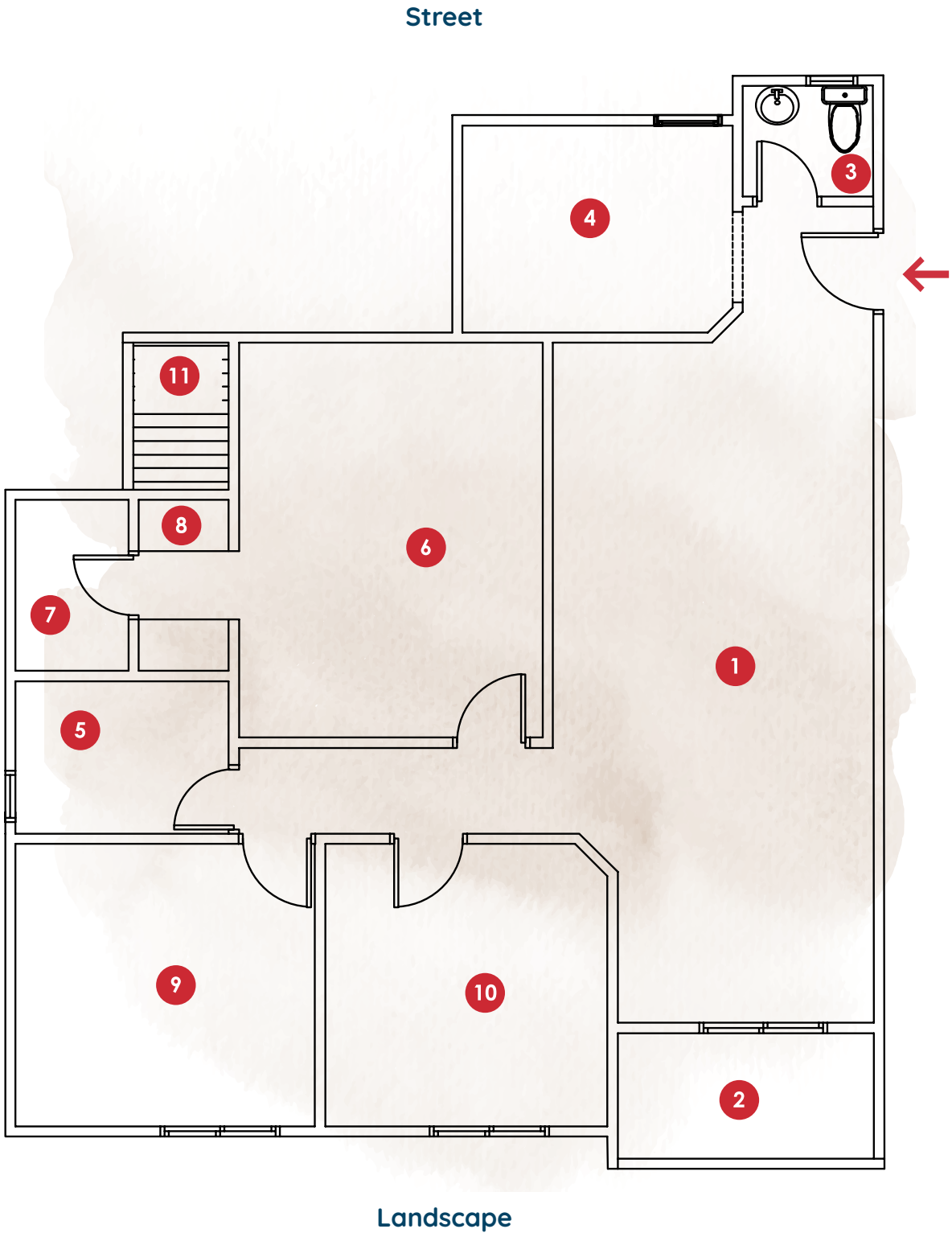
Plot 176

Flat (5) Areas 135 m²



Space No.	Name	Dimensions
1	Reception & Dining	8.07x3.86 M
2	Terrace	1.65x3.12 M
3	W.C	1.48 X1.71 M
4	Kitchen	2.54x3.28M
5	Bathroom	1.90x2.67 M
6	Master Bedroom	4.74x3.67 M
7	M.Ensuite	1.50x2.18 M
8	Dressing Room	2.18x1.18 M
9	Bedroom 1	3.48x3.42 M
10	Bedroom 2	3.48x3.68 M
11	Terrace 2	1.72x1.30 M

Floor
PLANS



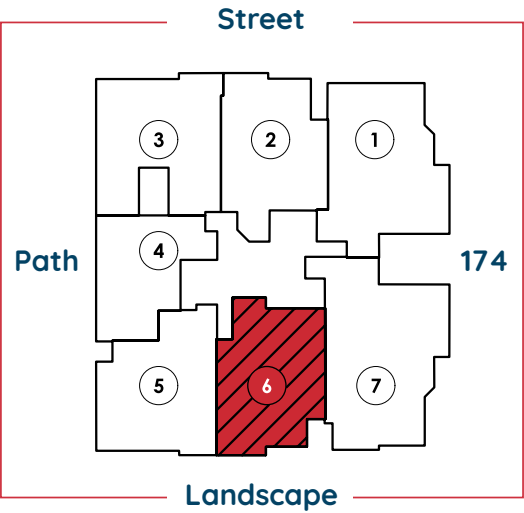
All renders and visual materials are for illustrative purpose only. Actual areas may vary from the started figures. All dimensions are measured to structural element.

Plot 176

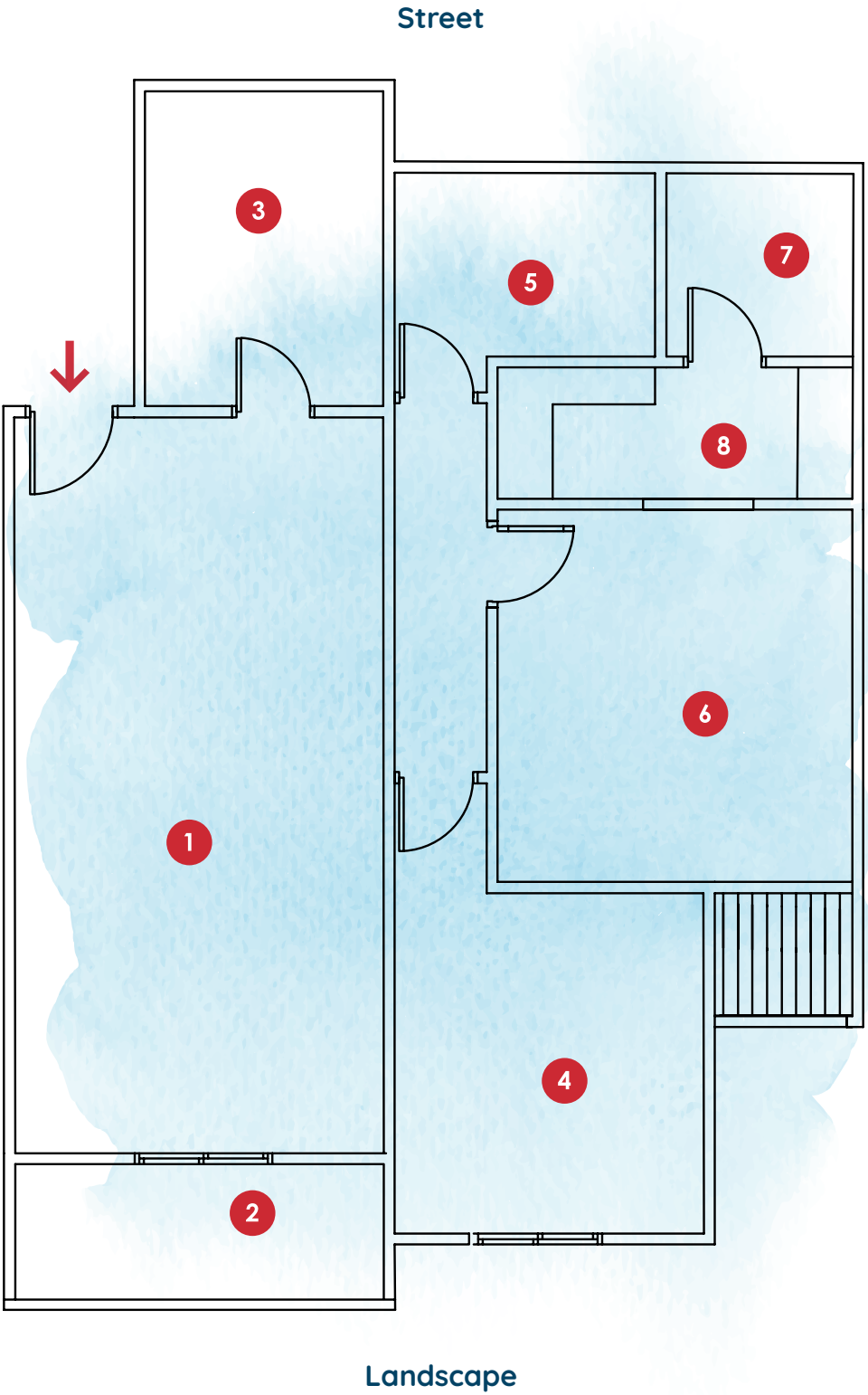
Floor
PLANS

Flat (6)

Areas 134 m²



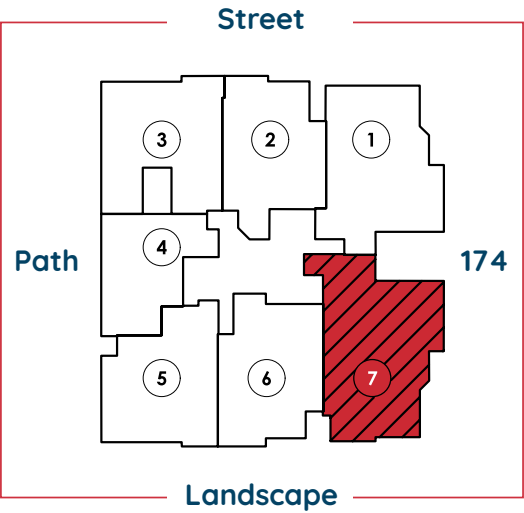
Space No.	Name	Dimensions
1	Reception & Dining	8.12x4.14M
2	Terrace	1.65x4.14 M
3	Kitchen	3.61x2.77 M
4	Bathroom	2.83x2.16 M
5	Master Bedroom	4.17x3.98 M
6	Dressing Room	1.55x3.98 M
7	M.Ensuite	2.16x2.15 M
8	Bedroom 1	3.88x3.54 M



Plot 176

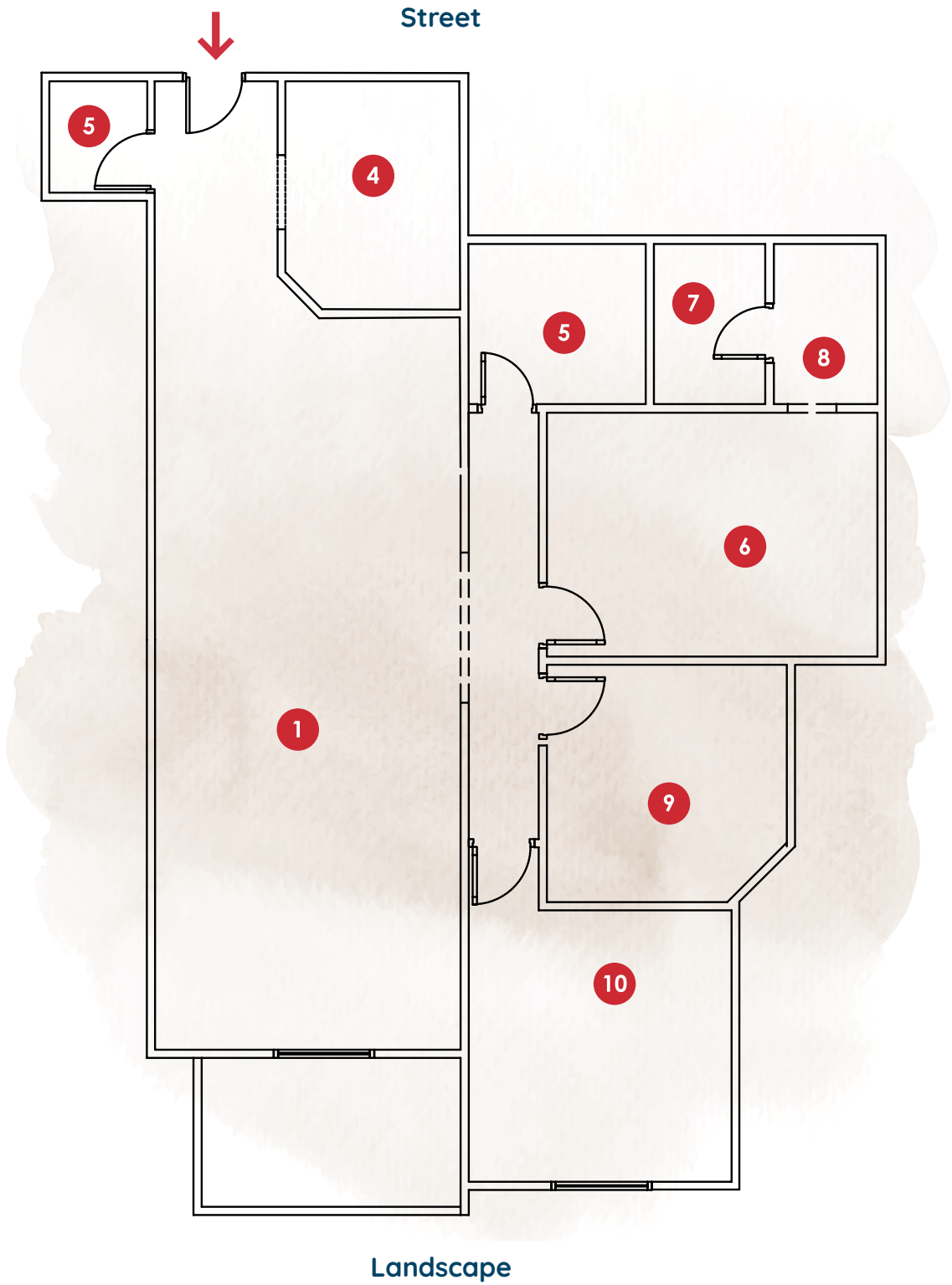
Flat (7)

Areas 182 m²



Space No.	Name	Dimensions
1	Reception & Dining	10.62x4.38 M
2	Terrace	3.89x2.25 M
3	W.C	1.84 X1.71 M
4	Kitchen	3.39x2.67M
5	Bathroom	2.48x2.66 M
6	Master Bedroom	3.62x4.91 M
7	M.Ensuite	1.72x2.47 M
8	Dressing Room	2.47x1.67 M
9	Bedroom 1	3.52x3.62 M
10	Bedroom 2	4.07x3.94 M

Floor
PLANS



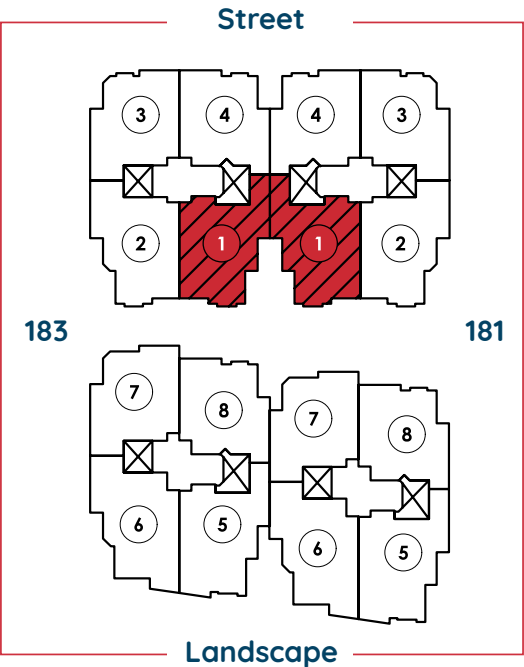
All renders and visual materials are for illustrative purpose only. Actual areas may vary from the started figures. All dimensions are measured to structural element.



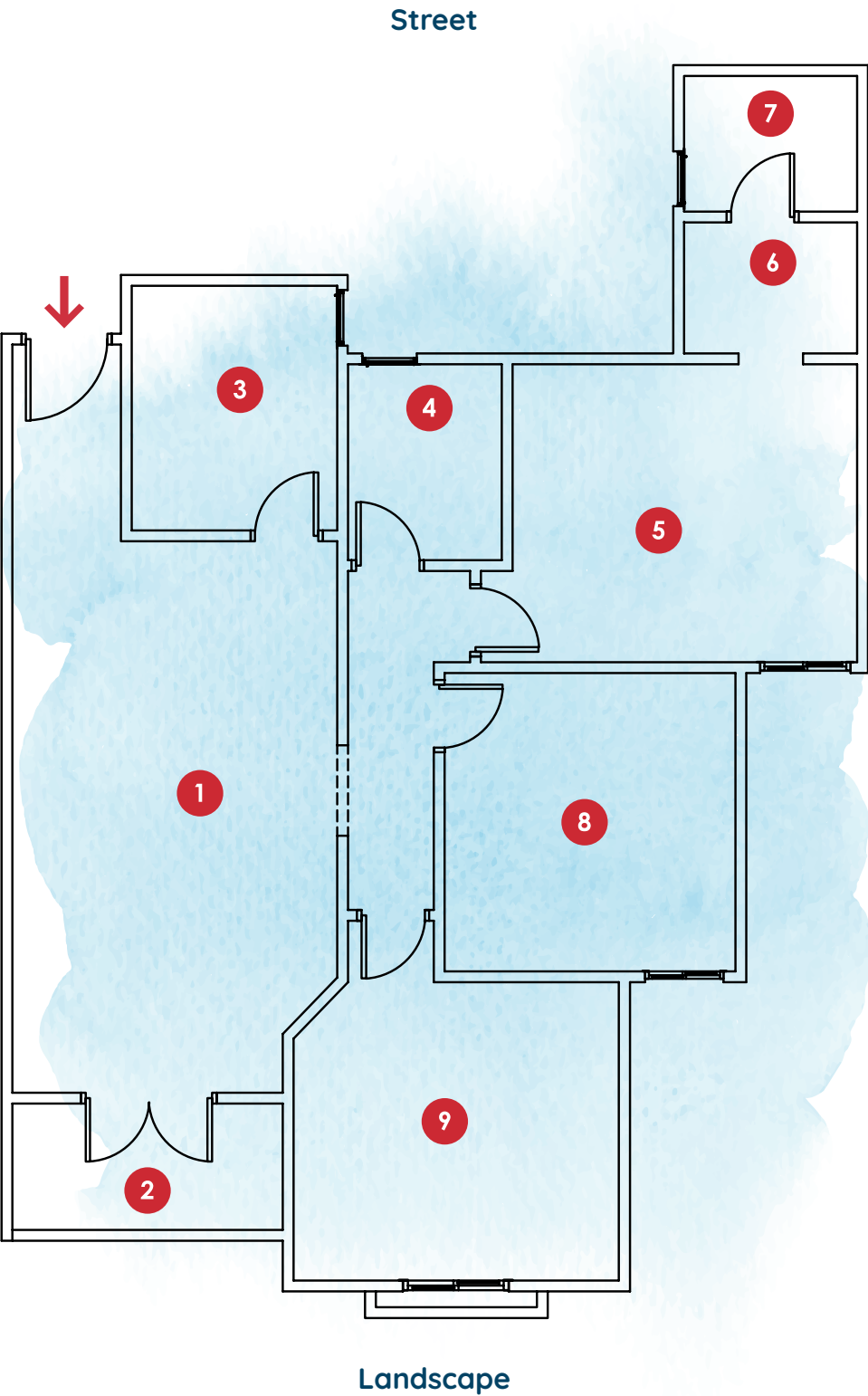
Plot 182

Floor
PLANS

Flat (1)
Areas 116 m²



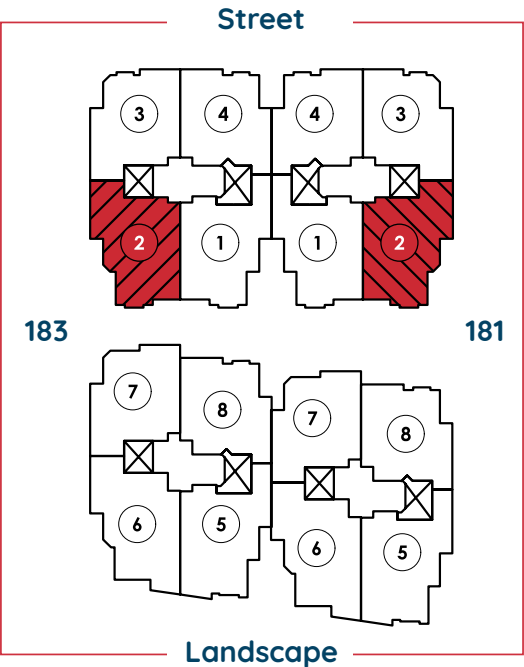
Space No.	Name	Dimensions
1	Reception & Dining	6.22x3.72 M
2	Terrace	1.58x3.11 M
3	Kitchen	2.89x2.39 M
4	Bathroom	2.35x1.82 M
5	Master Bedroom	3.48x3.94 M
6	Dressing Room	1.57x2.09 M
7	M.Ensuite	1.62x2.09 M
8	Bedroom 1	3.42x3.4 M
9	Bedroom 2	3.48x3.78 M



All renders and visual materials are for illustrative purpose only. Actual areas may vary from the started figures. All dimensions are measured to structural element.

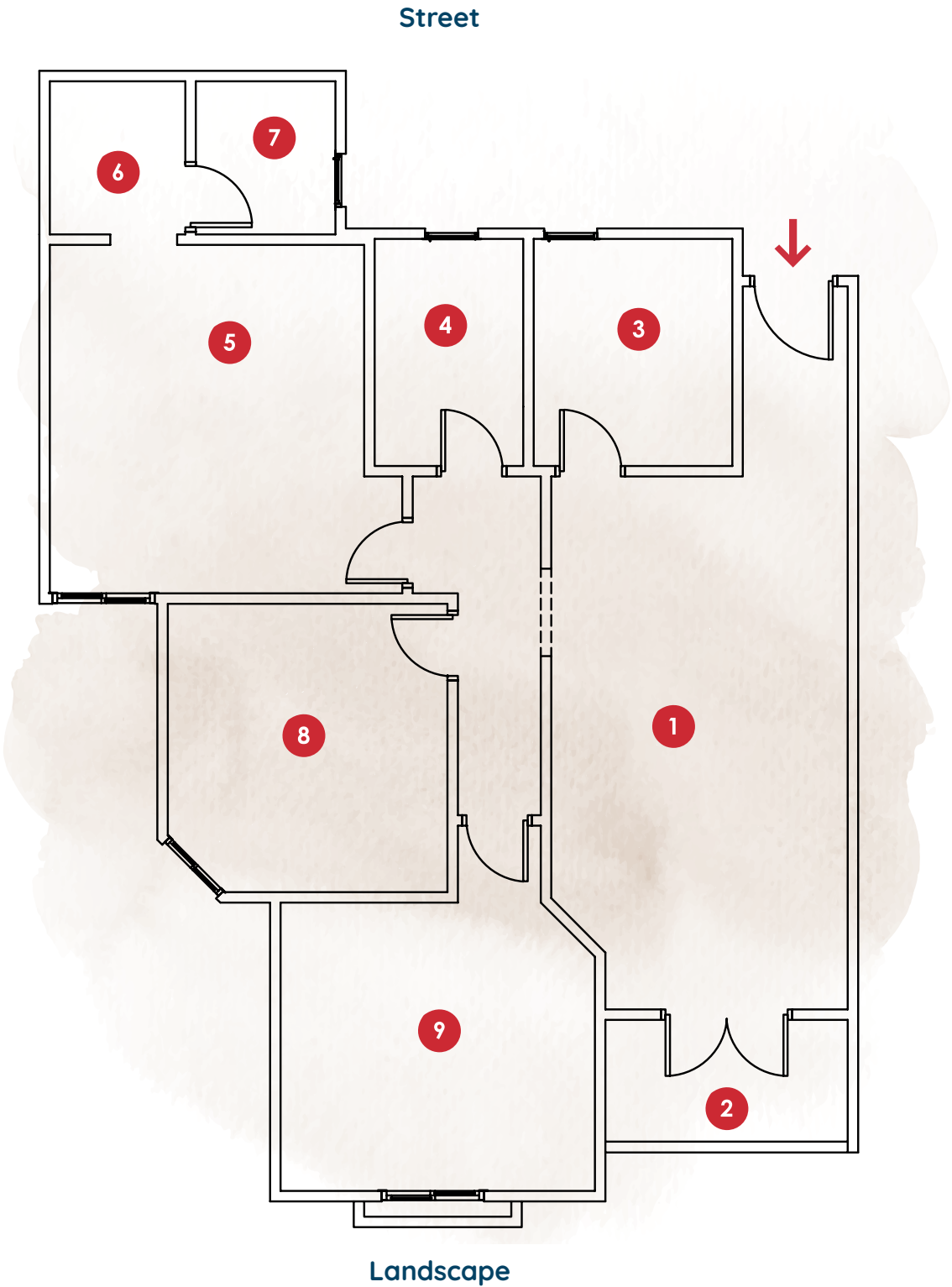
Plot 182

Flat (2)
Areas 118 m²



Space No.	Name	Dimensions
1	Reception & Dining	6.22x3.52 M
2	Terrace	1.58x2.90 M
3	Kitchen	2.78x2.39 M
4	Bathroom	2.78x1.82 M
5	Master Bedroom	4.11x3.78 M
6	Dressing Room	1.87x1.73 M
7	M.Ensuite	1.87x1.78 M
8	Bedroom 1	3.42x3.38 M
9	Bedroom 2	3.48x3.78 M

Floor
PLANS

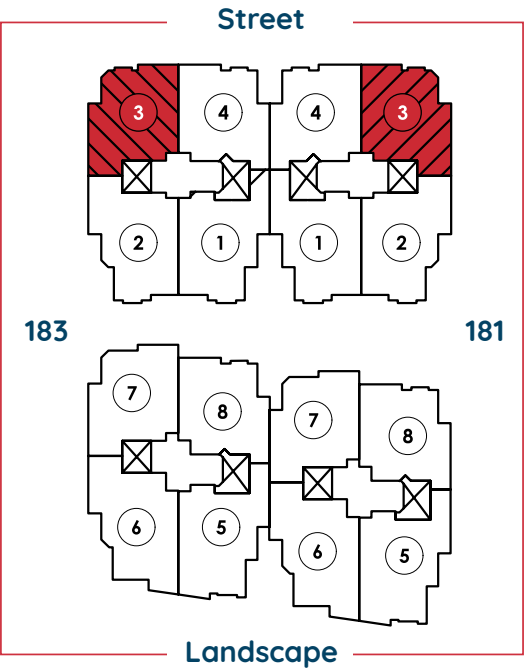


All renders and visual materials are for illustrative purpose only. Actual areas may vary from the started figures. All dimensions are measured to structural element.

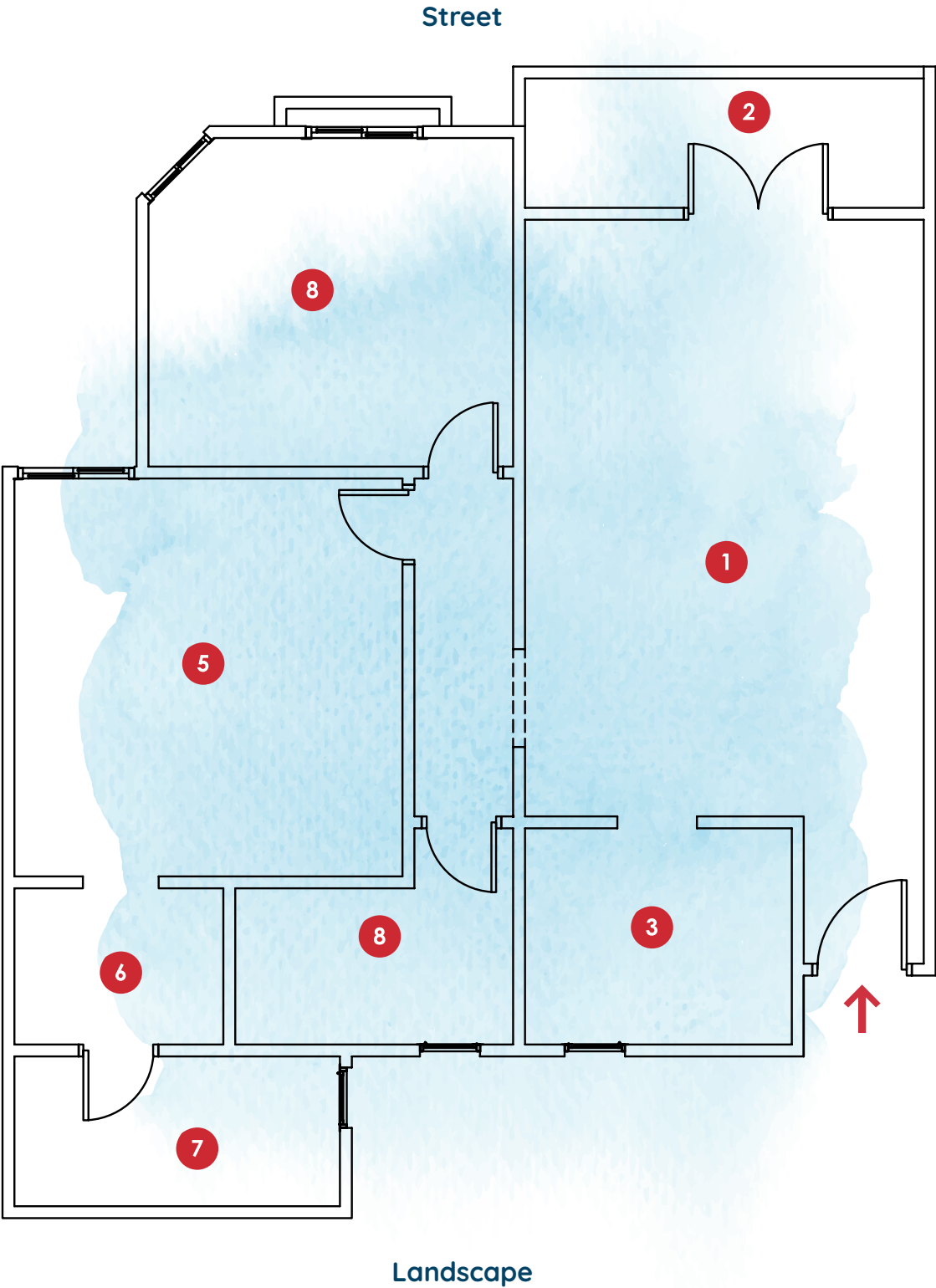
Plot 182

Floor
PLANS

Flat (3)
Areas 112 m²



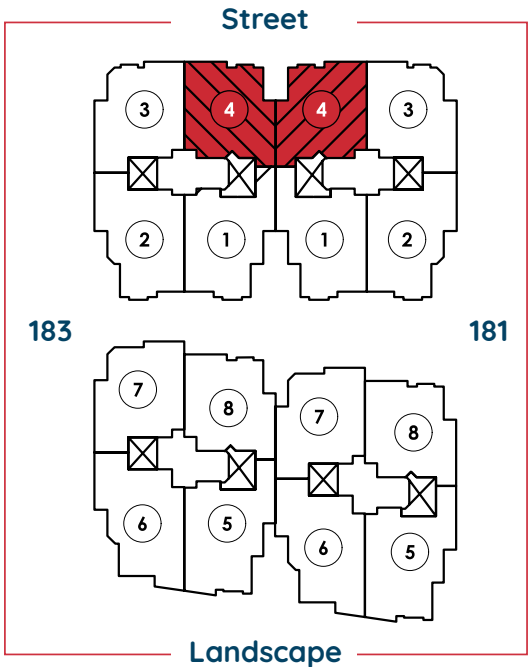
Space No.	Name	Dimensions
1	Reception & Dining	6.12x4.12 M
2	Terrace	1.48x4.12 M
3	Kitchen	2.35x2.80 M
4	Bathroom	2.35x2.92 M
5	Master Bedroom	4.12x4.08 M
6	Dressing Room	1.69x2.28 M
7	M.Ensuite	1.63x3.51 M
8	Bedroom 1	3.48x3.85 M



All renders and visual materials are for illustrative purpose only. Actual areas may vary from the started figures. All dimensions are measured to structural element.

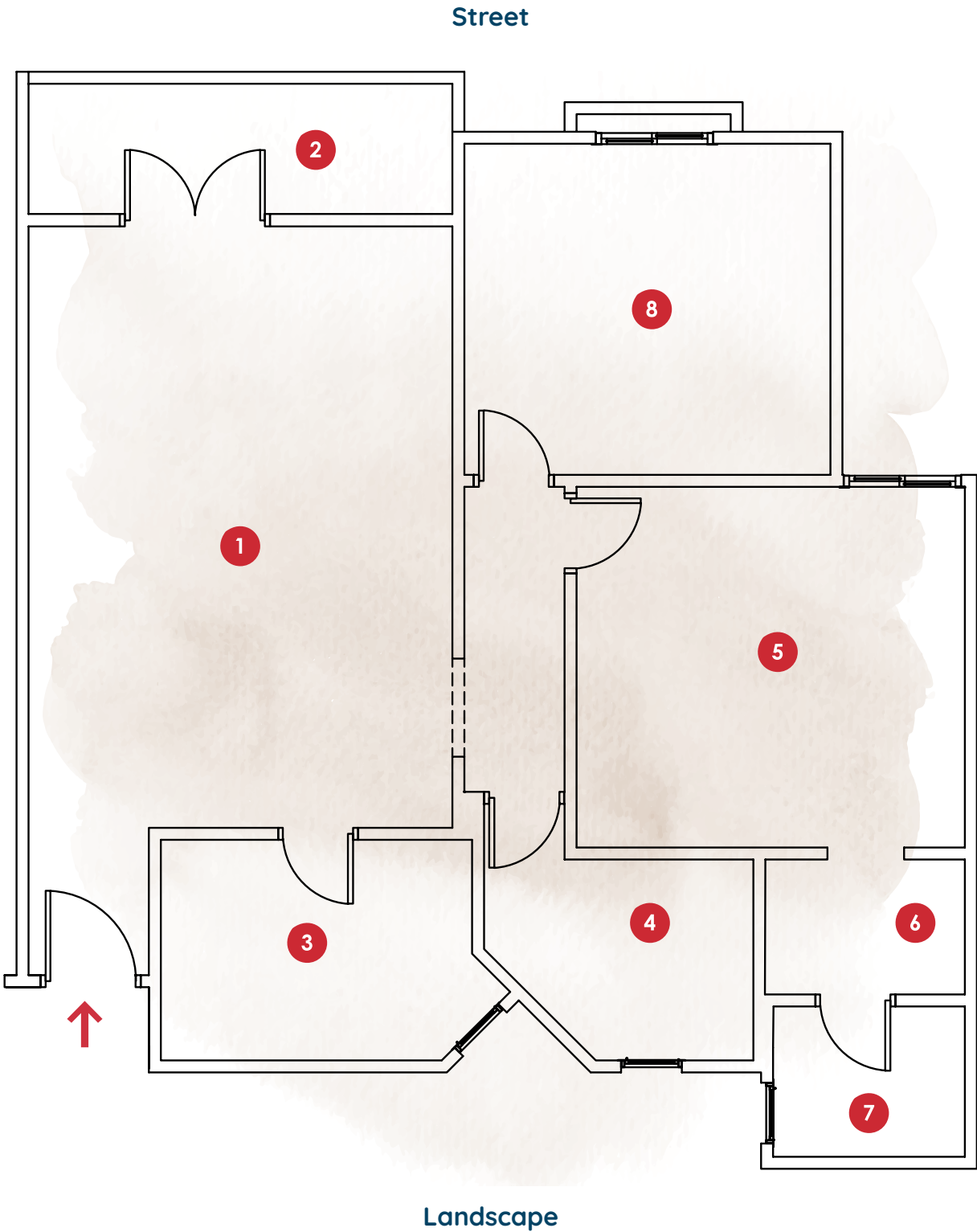
Plot 182

Flat (4)
Areas 110 m²



Space No.	Name	Dimensions
1	Reception & Dining	6.12x4.35 M
2	Terrace	1.48x4.35 M
3	Kitchen	2.34x3.23 M
4	Bathroom	2.18x2.81 M
5	Master Bedroom	3.72x4.00 M
6	Dressing Room	1.47x2.11 M
7	M.Ensuite	1.62x2.09 M
8	Bedroom 1	3.48x3.84 M

Floor
PLANS

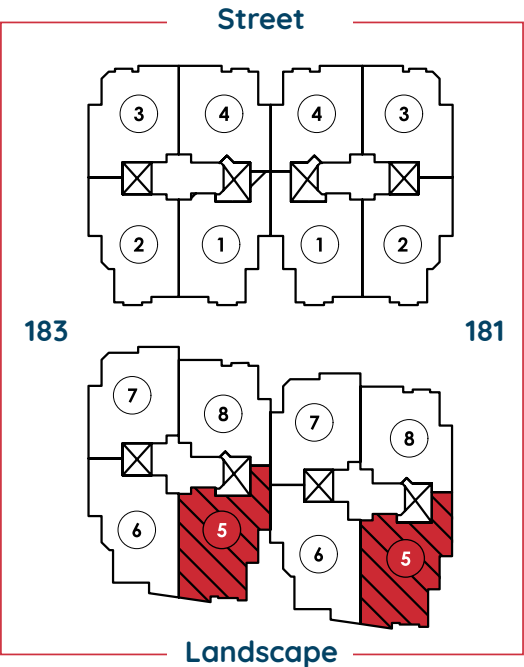


All renders and visual materials are for illustrative purpose only. Actual areas may vary from the started figures. All dimensions are measured to structural element.

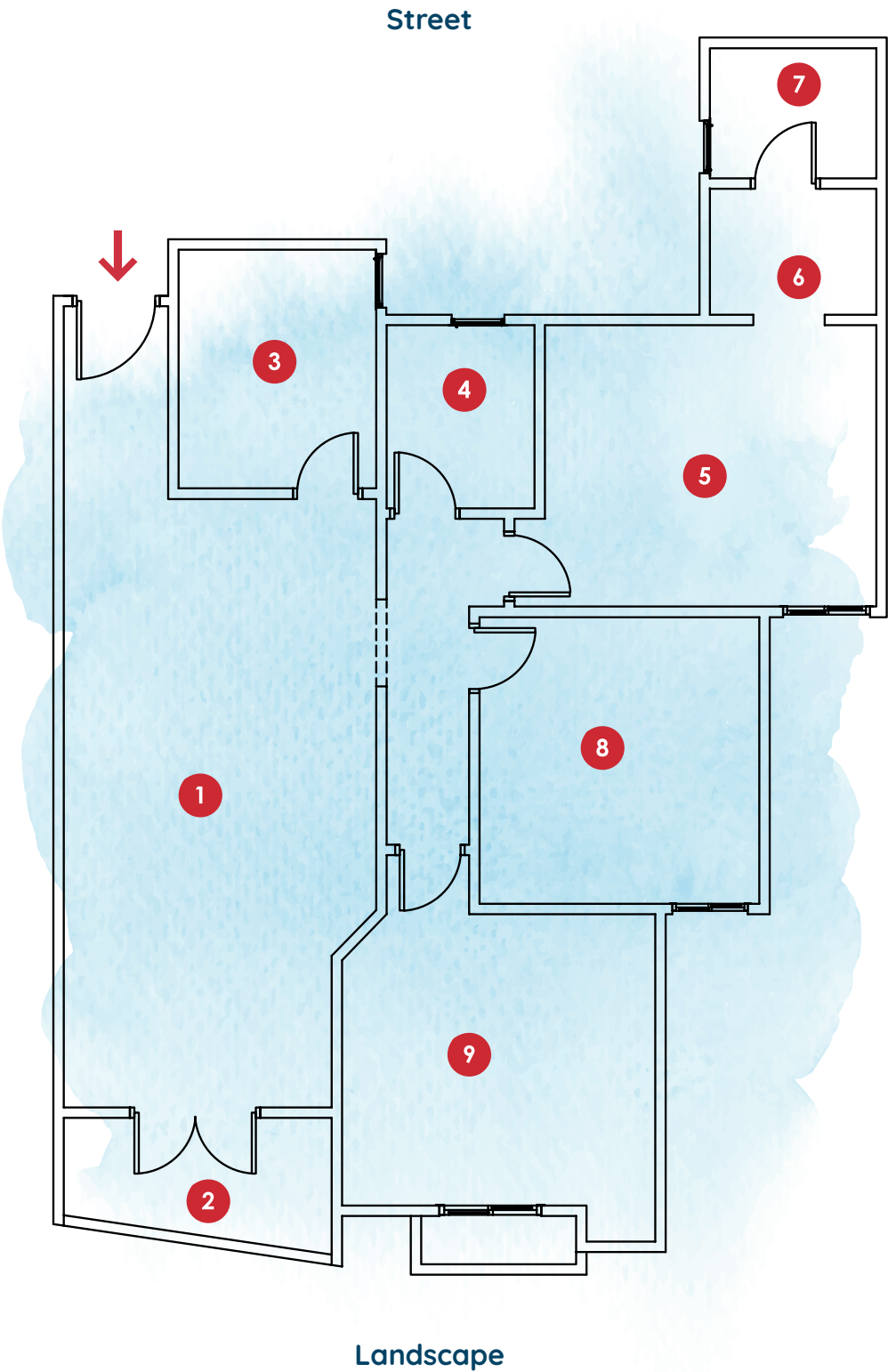
Plot 182

Floor
PLANS

Flat (5)
Areas 120 m²



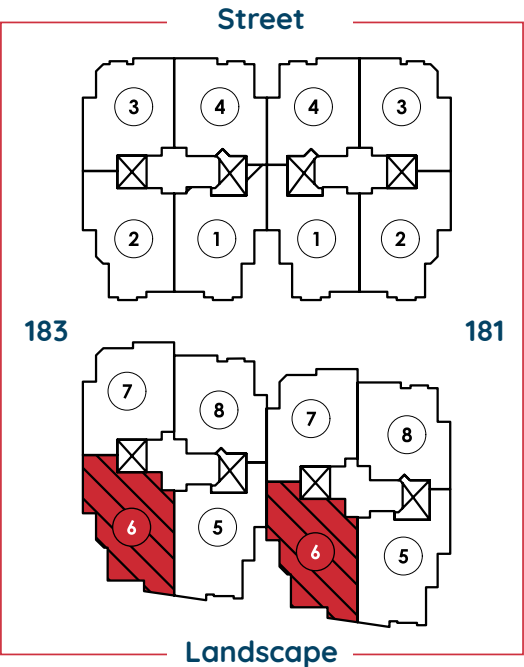
Space No.	Name	Dimensions
1	Reception & Dining	9.45x3.71 M
2	Terrace	1.75x3.19 M
3	Kitchen	2.93x2.51 M
4	Bathroom	2.35x1.81 M
5	Master Bedroom	3.41x3.95 M
6	Dressing Room	1.63x2.09 M
7	M.Ensuite	1.62x2.09 M
8	Bedroom 1	3.49x3.46 M
9	Bedroom 2	3.96x3.79 M



All renders and visual materials are for illustrative purpose only. Actual areas may vary from the started figures. All dimensions are measured to structural element.

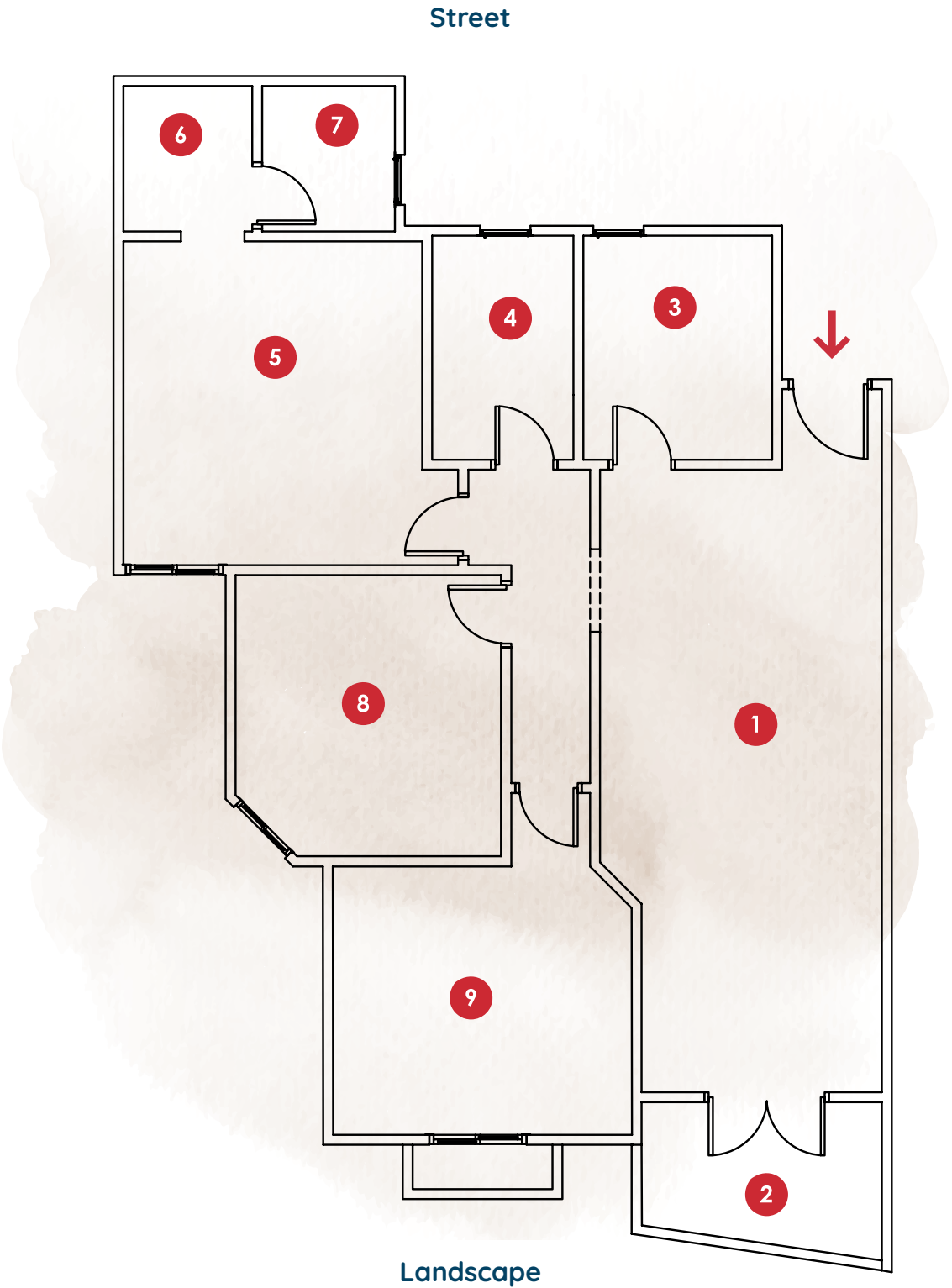
Plot 182

Flat (6)
Areas 122 m²



Space No.	Name	Dimensions
1	Reception & Dining	8.66x3.52M
2	Terrace	2.08x3.00 M
3	Kitchen	2.88x2.44 M
4	Bathroom	2.88x1.74 M
5	Master Bedroom	4.08x3.80 M
6	Dressing Room	1.87x1.73 M
7	M.Ensuite	1.87x1.78 M
8	Bedroom 1	3.46x3.38 M
9	Bedroom 2	3.43x3.78M

Floor
PLANS

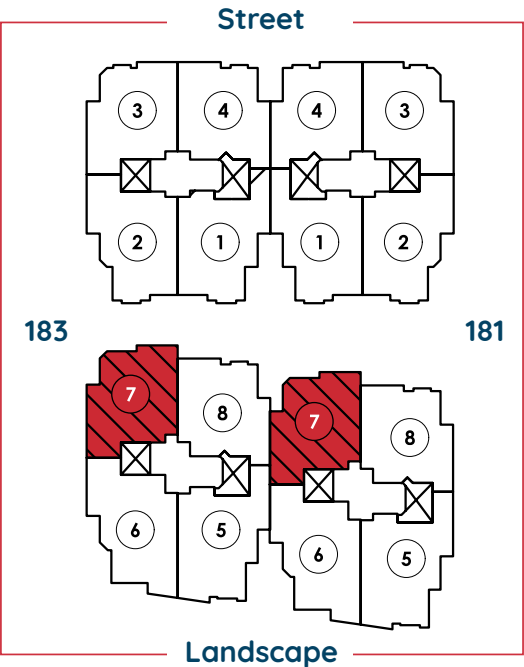


All renders and visual materials are for illustrative purpose only. Actual areas may vary from the started figures. All dimensions are measured to structural element.

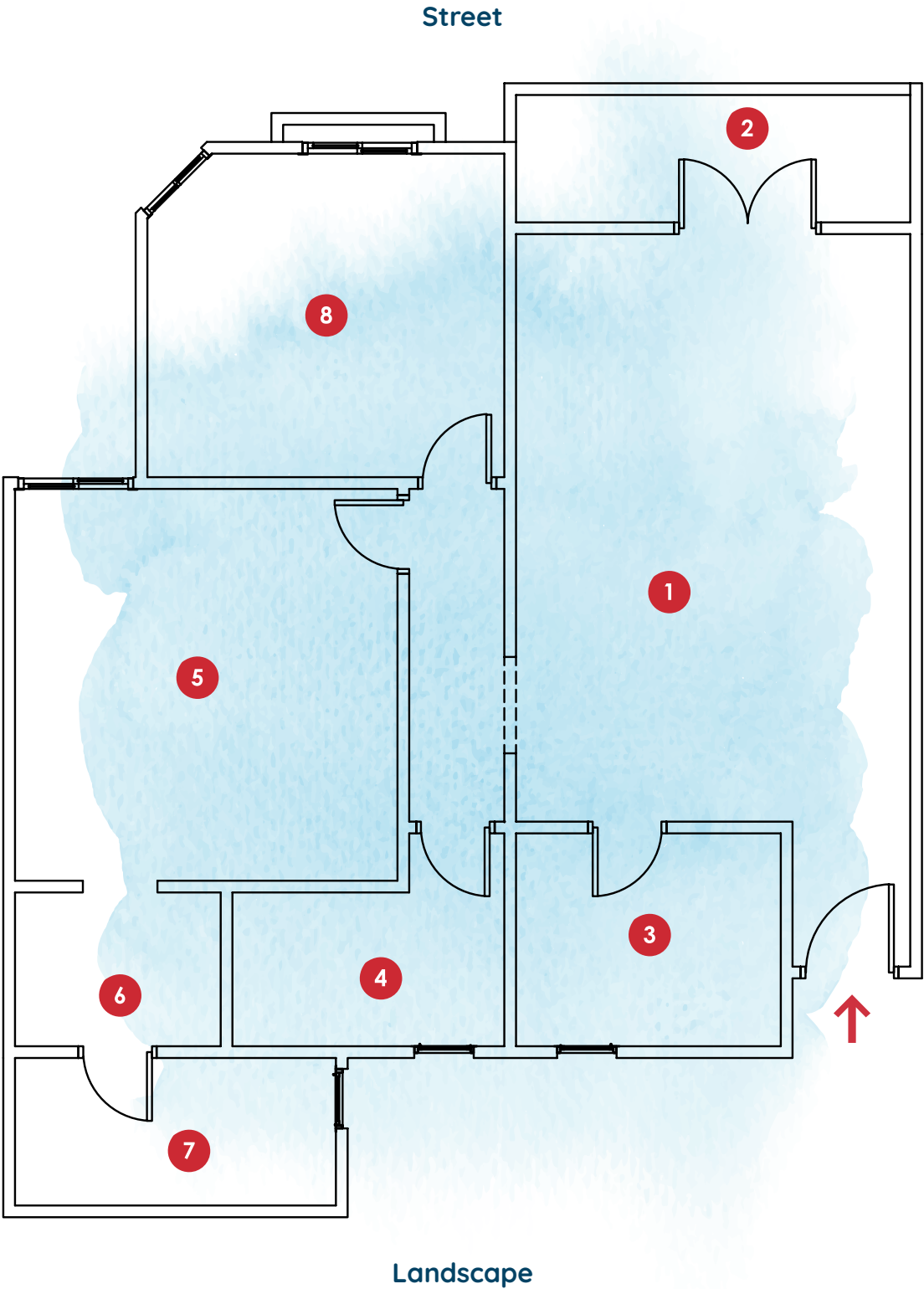
Plot 182

Floor
PLANS

Flat (7)
Areas 111 m²



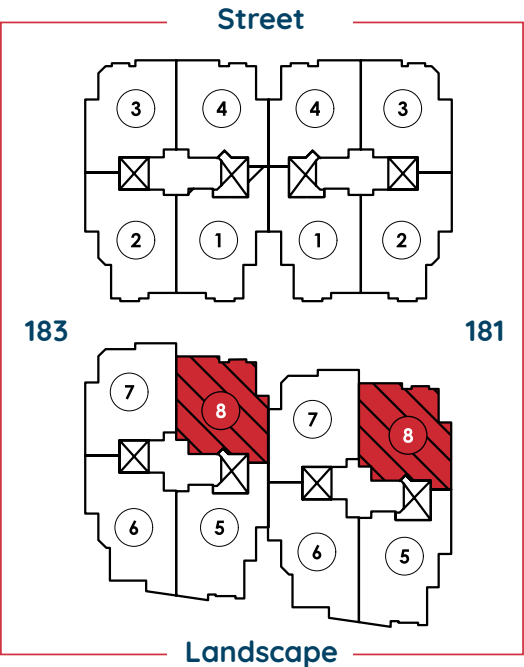
Space No.	Name	Dimensions
1	Reception & Dining	7.66x4.14M
2	Terrace	1.48x4.26 M
3	Kitchen	2.35x2.88 M
4	Bathroom	2.35x2.90 M
5	Master Bedroom	4.18x4.08 M
6	Dressing Room	1.69x2.27 M
7	M.Ensuite	1.63x3.51 M
8	Bedroom 1	3.48x3.83 M



All renders and visual materials are for illustrative purpose only. Actual areas may vary from the started figures. All dimensions are measured to structural element.

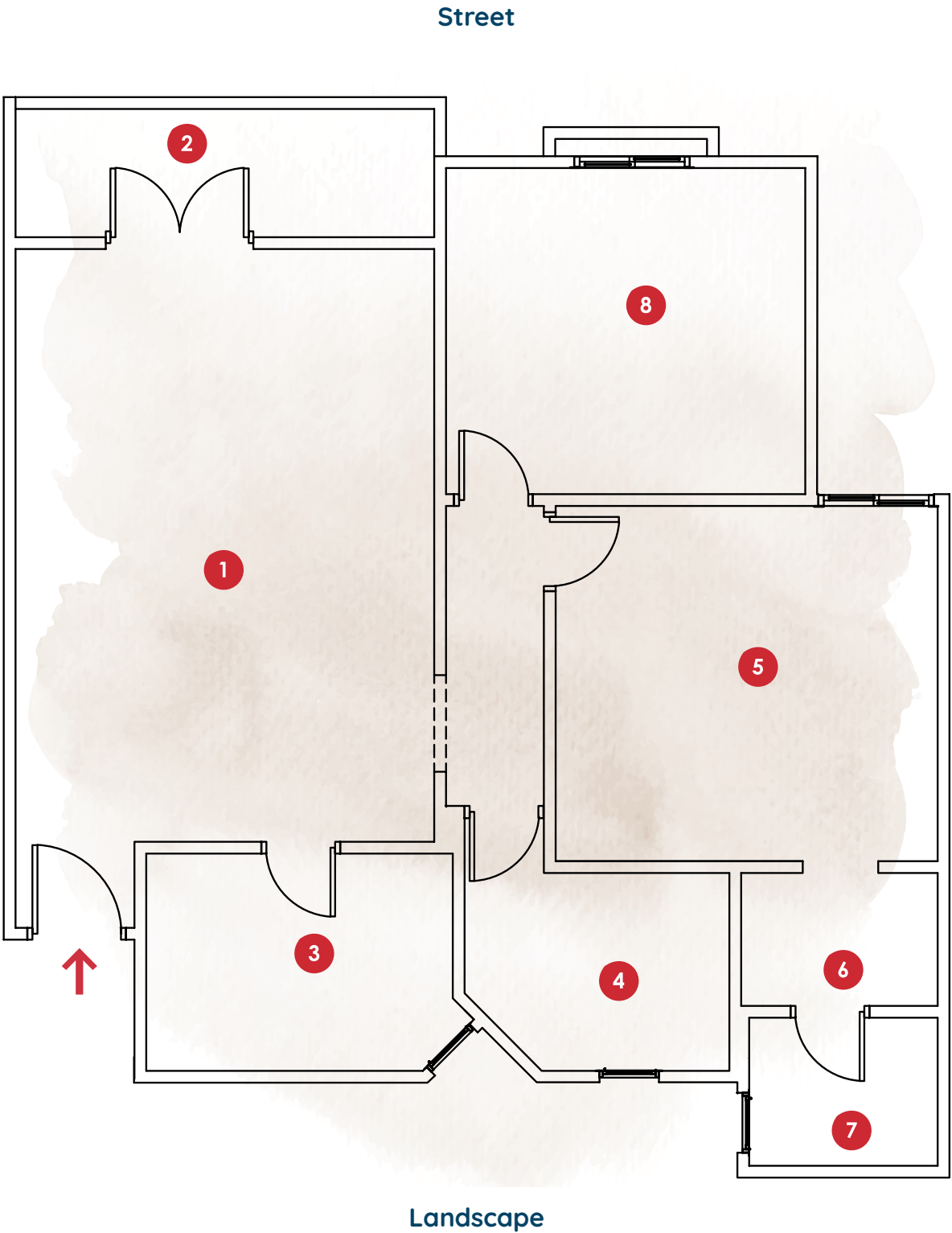
Plot 182

Flat (8)
Areas 109 m²



Space No.	Name	Dimensions
1	Reception & Dining	7.06x4.36M
2	Terrace	1.48x4.42 M
3	Kitchen	3.35x2.38 M
4	Bathroom	2.18x2.75 M
5	Master Bedroom	3.78x4.00 M
6	Dressing Room	1.47x2.13 M
7	M.Ensuite	1.62x2.09 M
8	Bedroom 1	3.49x3.83 M

Floor
PLANS



All renders and visual materials are for illustrative purpose only. Actual areas may vary from the started figures. All dimensions are measured to structural element.

El Batal Group would be
pleased to have you as a
new member in our family.



ELBATAL

DEVELOPMENTS

 19502

Headquarters:

59 El-Moltaka El Araby, Sheraton Heliopolis, Cairo, Egypt.

6th of October Sales Office:

Block #23, Ahmed Zewil St., October Gardens District, 6th
of October, Giza

Heliopolis Sales Office:

12 block 1156 Mosheer Ahmed Ismail Rd. Unitower